

Digital Associativity Self - Stalking

Assignment 02

Submission

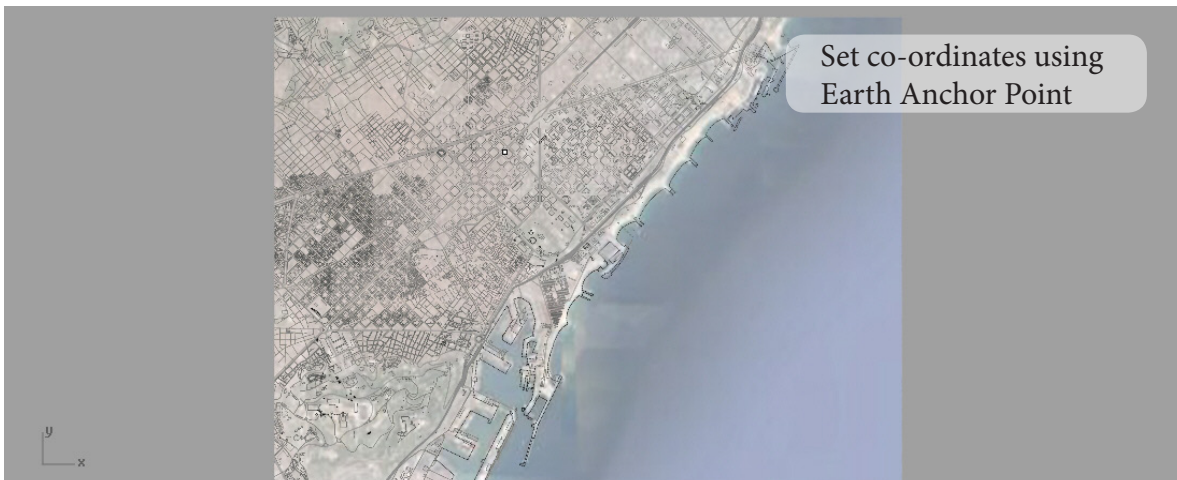
17th February 2015



SUBMITTED BY:
AYAAN BARODAWALA



- First task was to track myself using Runkeeper and then capturing the Google image of the places where the self-stalking was done
- Taking the start point co-ordinates from Google Earth and using Earth Anchor Points to mark the co-ordinates in Rhino
- Download the kml file from the Runkeeper software and attach it to the path file in grasshopper
- Next using the grasshopper script to set that point on the Google Image as the surface, and a mesh is created with the tracked points and those are connected with a polyline



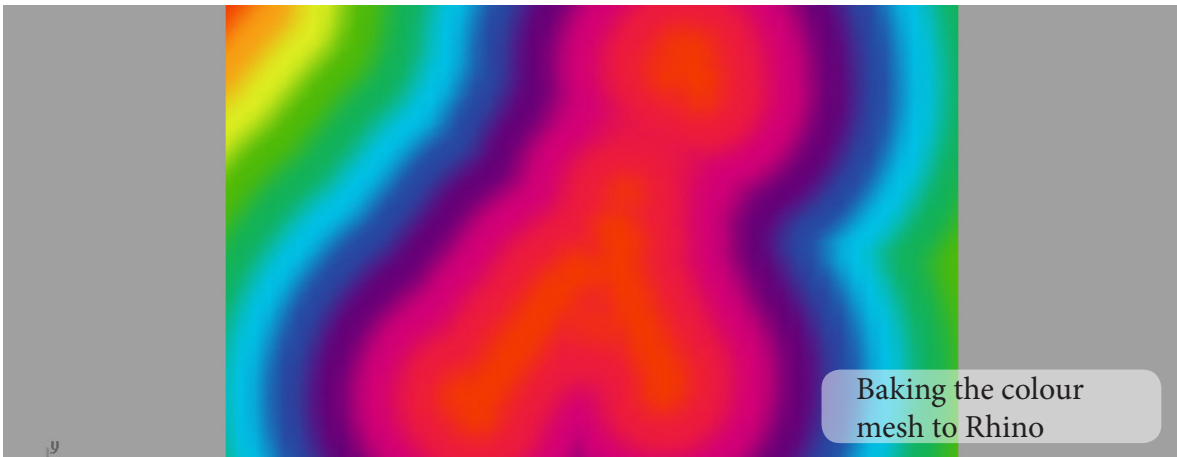
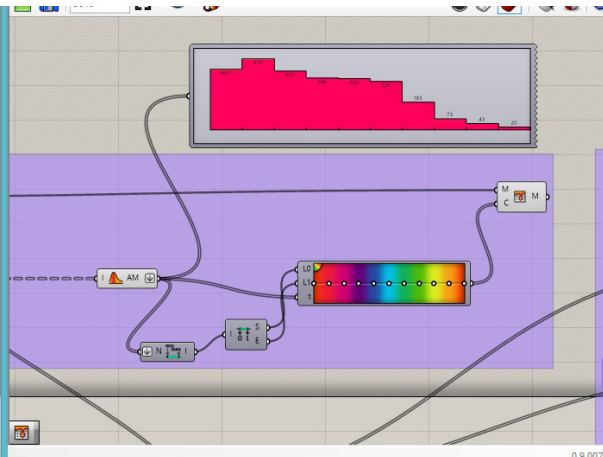
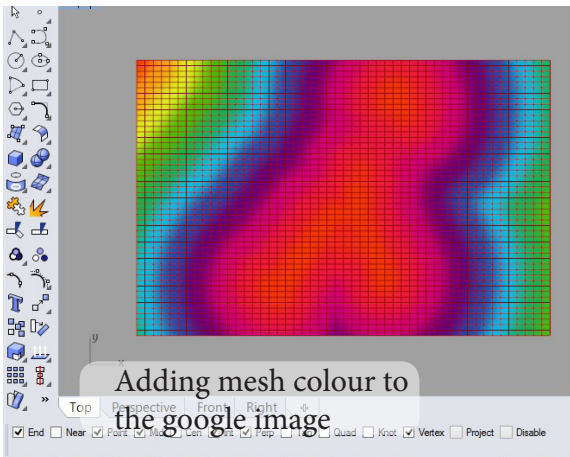
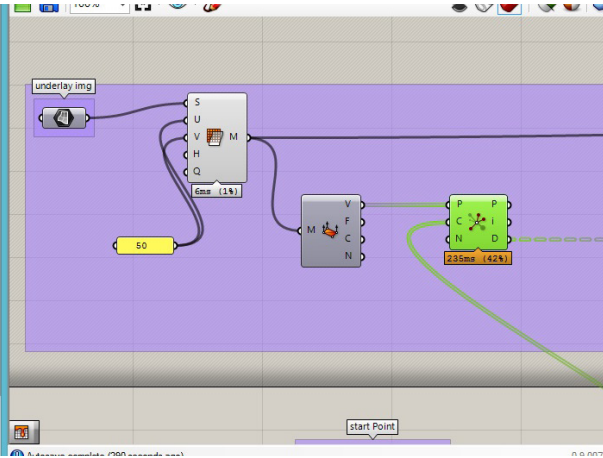
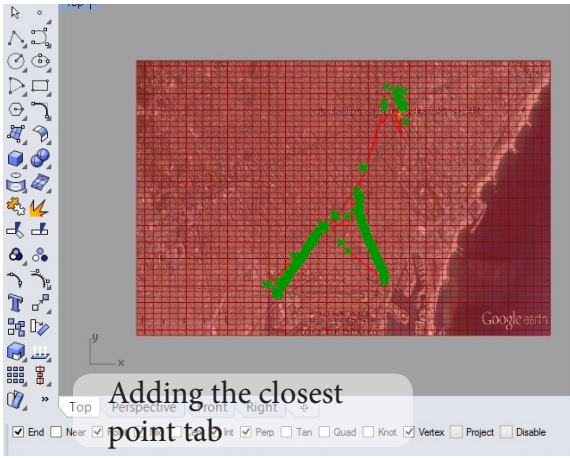
Command:

Set the kml file on Grasshopper

Set points using coordinates from Google

Tagging points to Geo to XYZ tab

Set the google underlay image as a surface



Finding distance between each point

0.9.0075

Adding circles with specific radius to the points

6mm (1%)

28mm (5%)

to make the circle size smaller

to fix 0.0 radius

Divide the circle to points to create circles

50

180ms (24%)

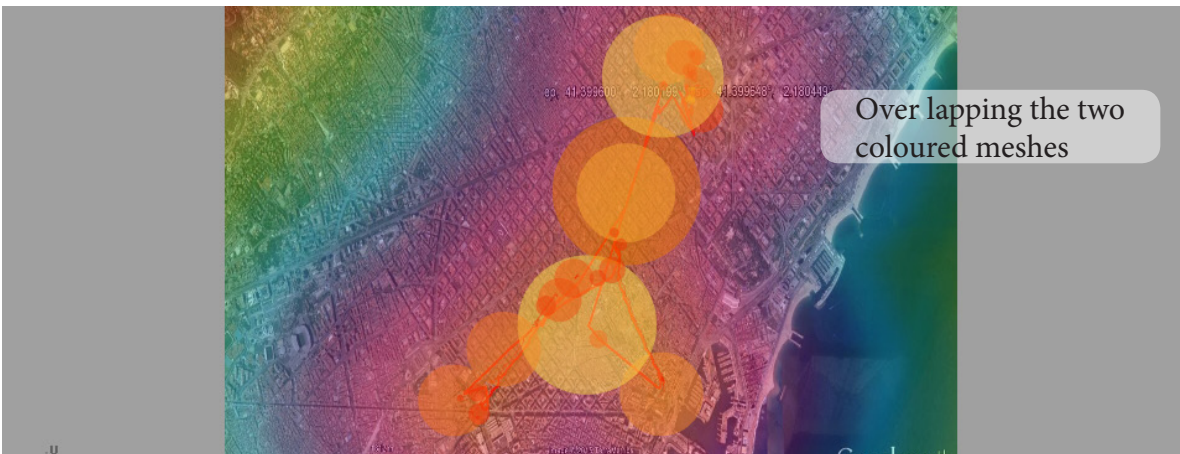
103ms (14%)

139 10.931555
140 8.022921
141 7.76489
142 8.438124

Adding mesh colour to the circles

103ms (14%)

46ms (6%)



The Presentation Part

