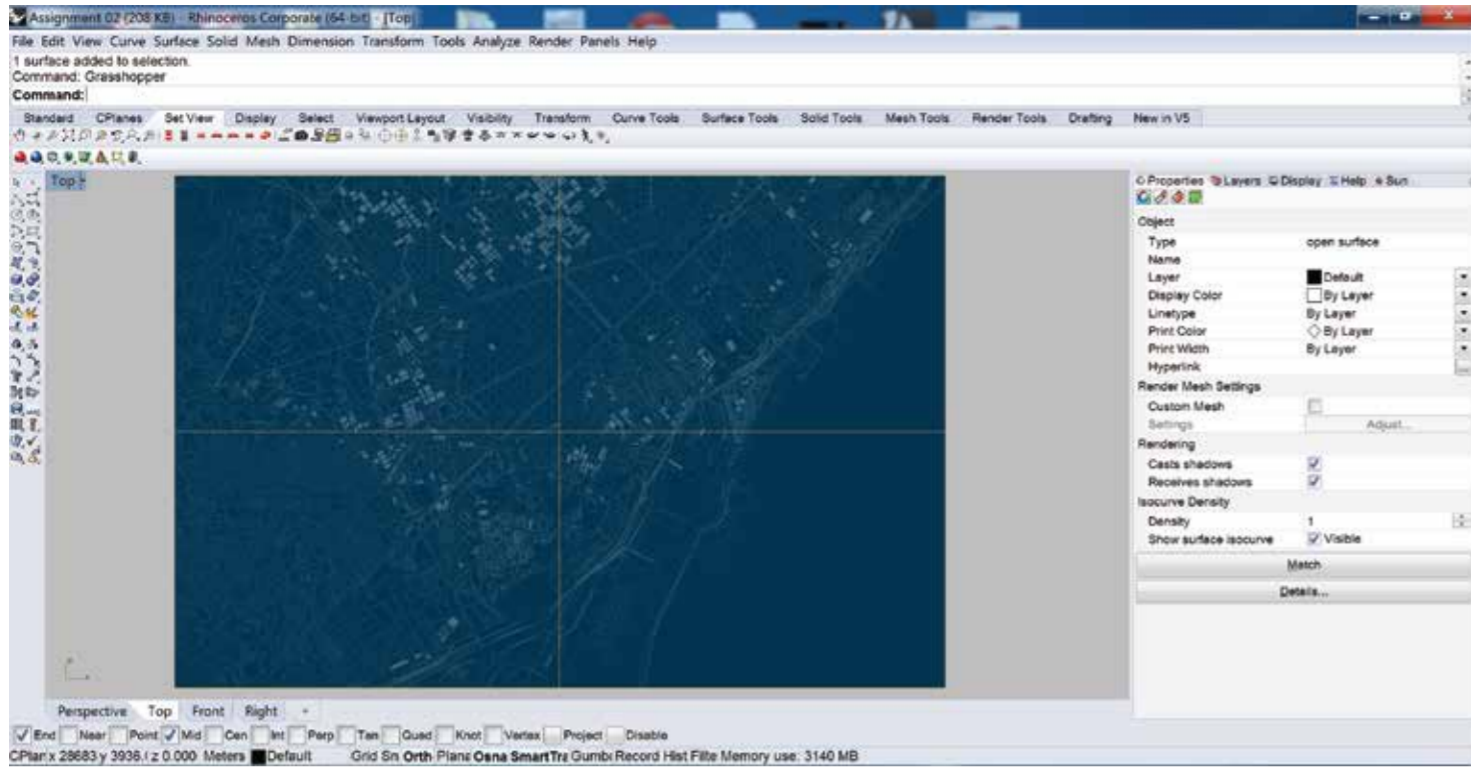
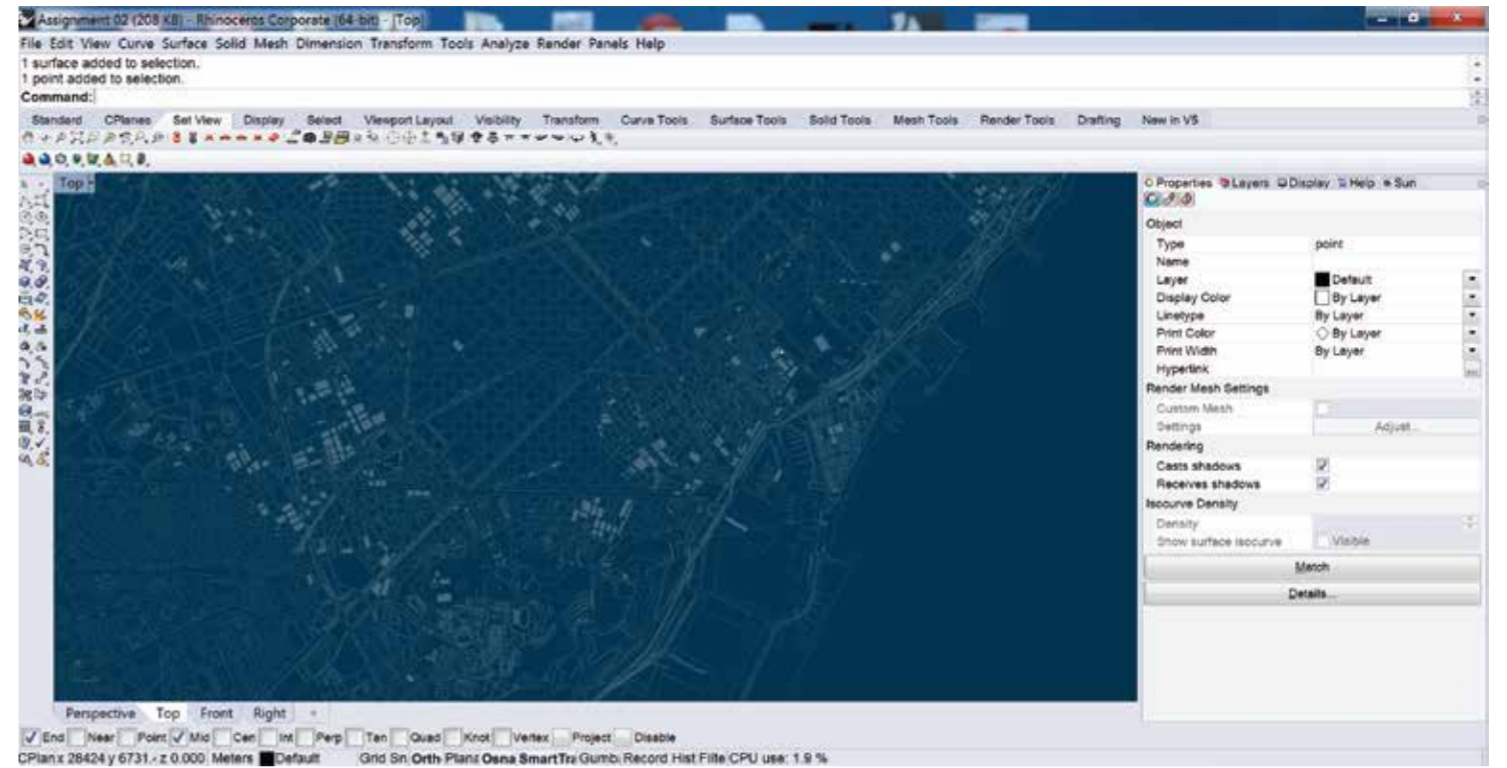


Stalking Yourself

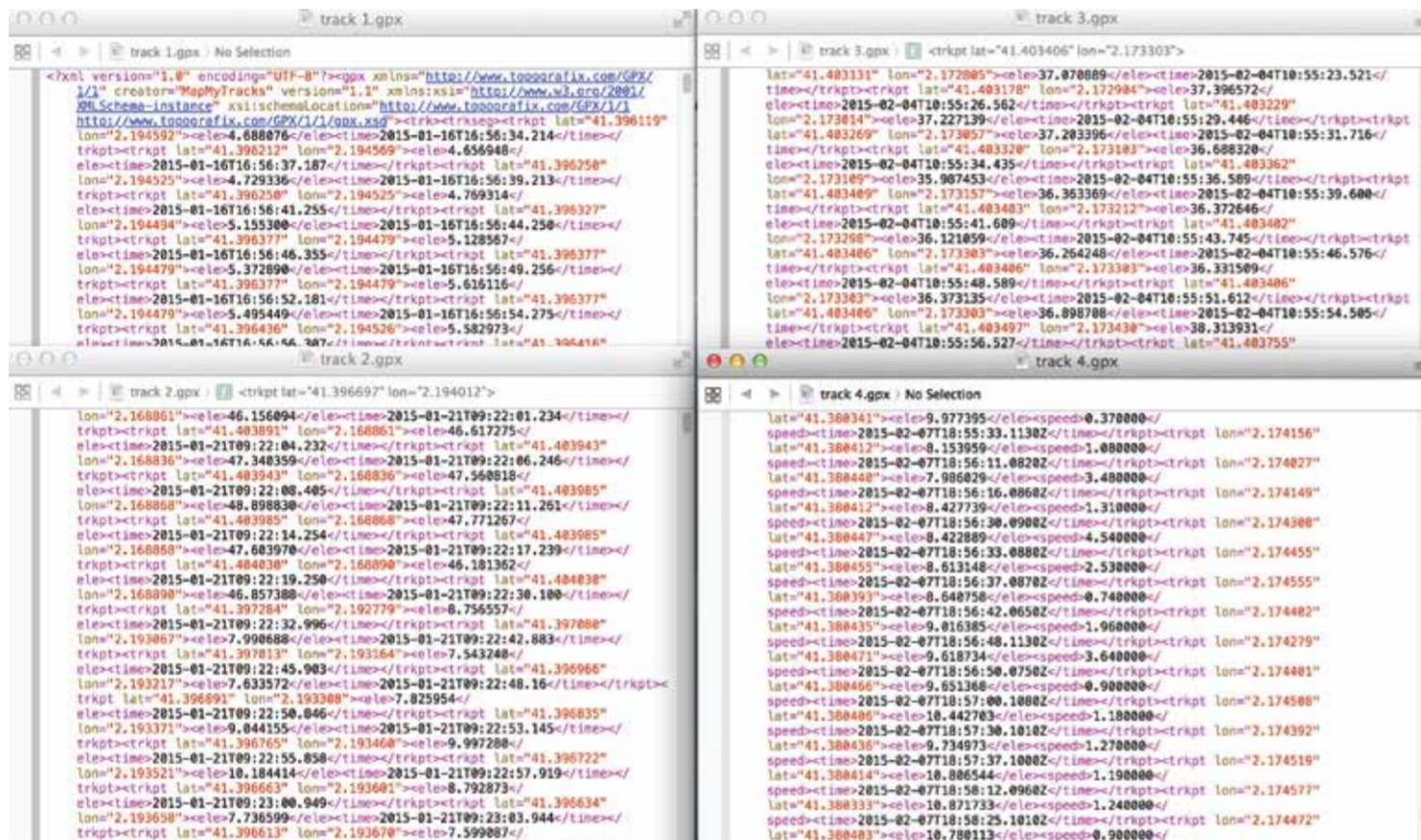
1. Image of Barcelona Map Scaled and opened on Rhino.



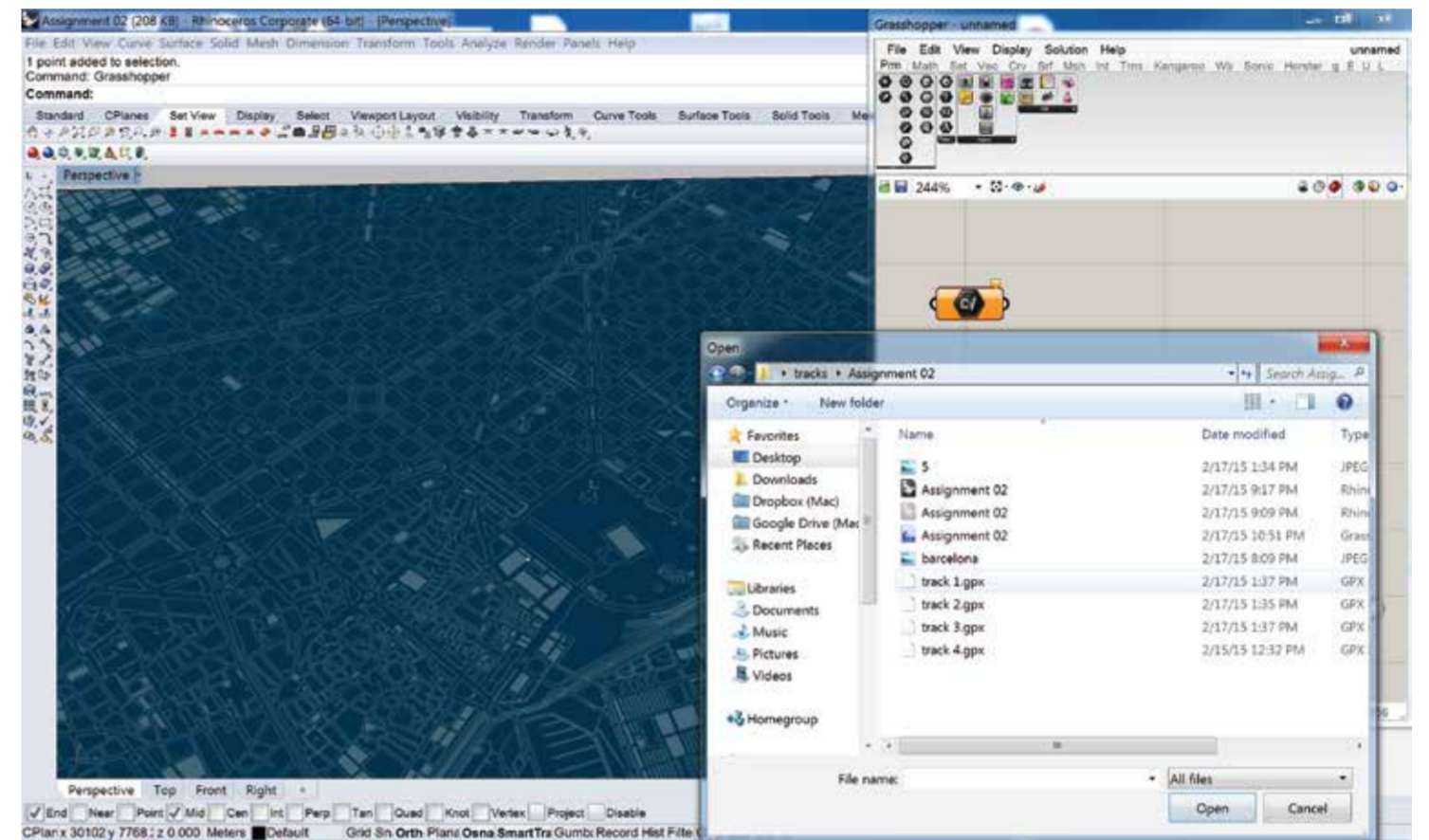
2. A point was marked on the map with the exact coordinates noted from Google Earth.



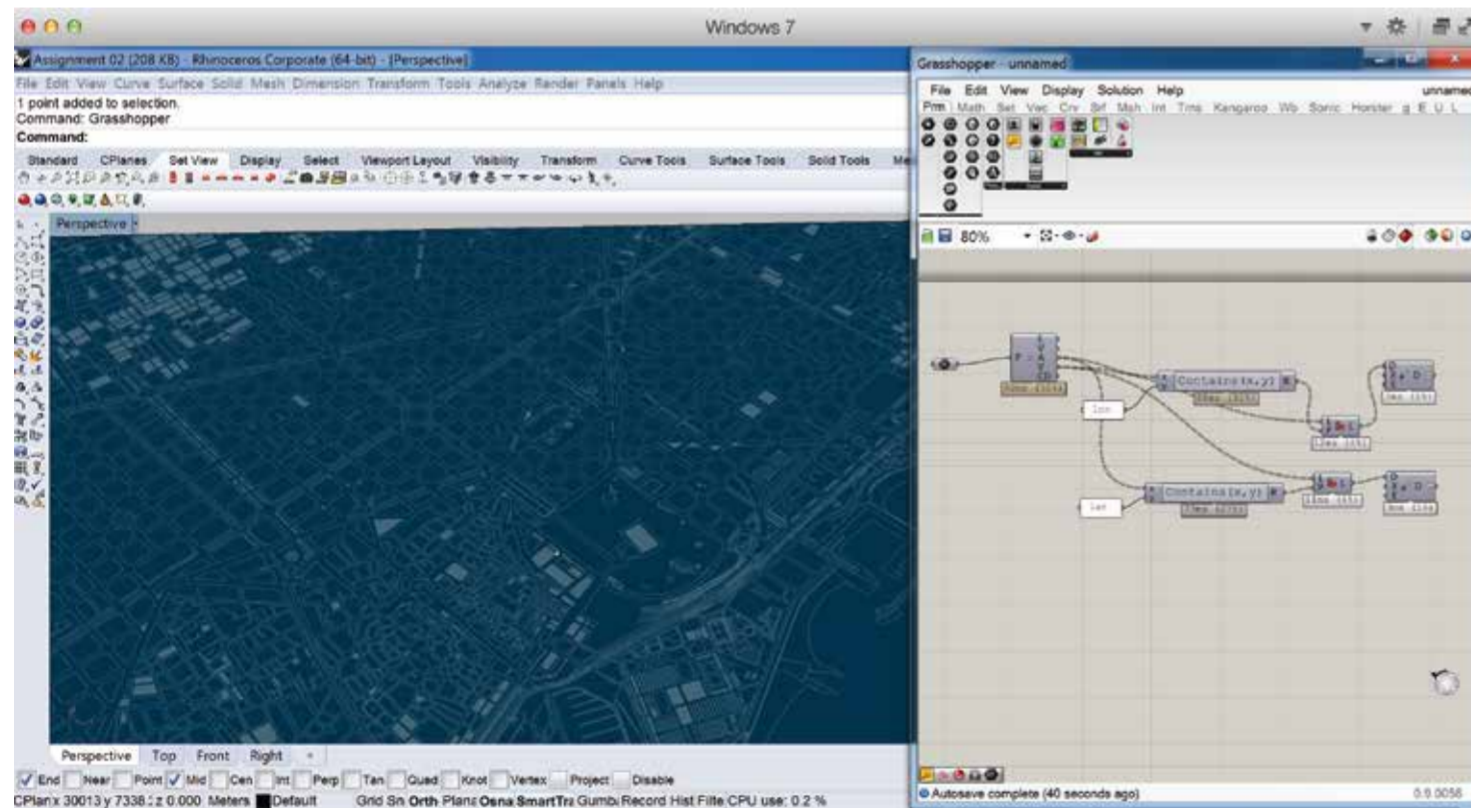
3. The GPX files were used from our tracks.



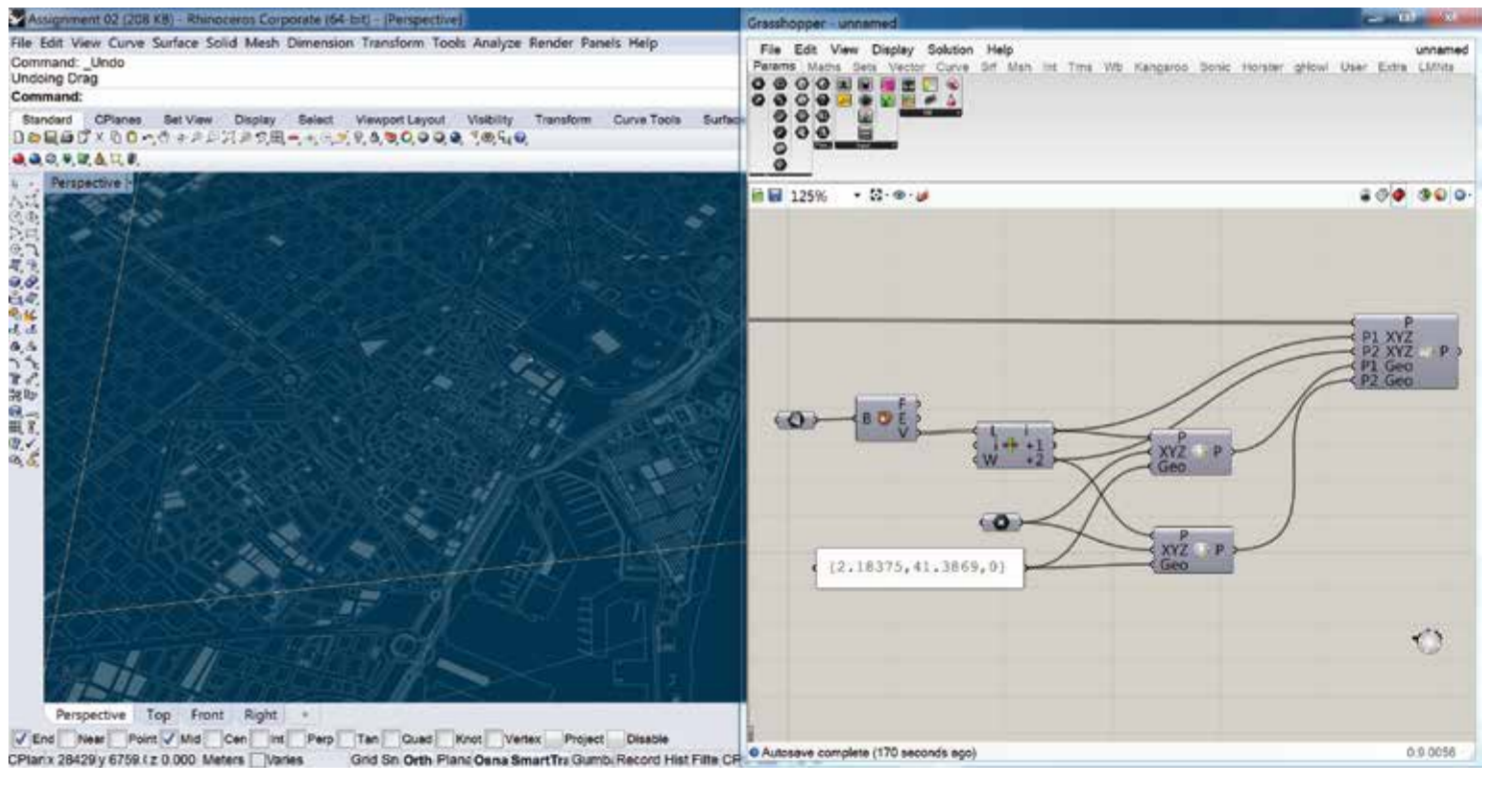
4. Using File Path on Grasshopper, GPX file of track 1 was located.



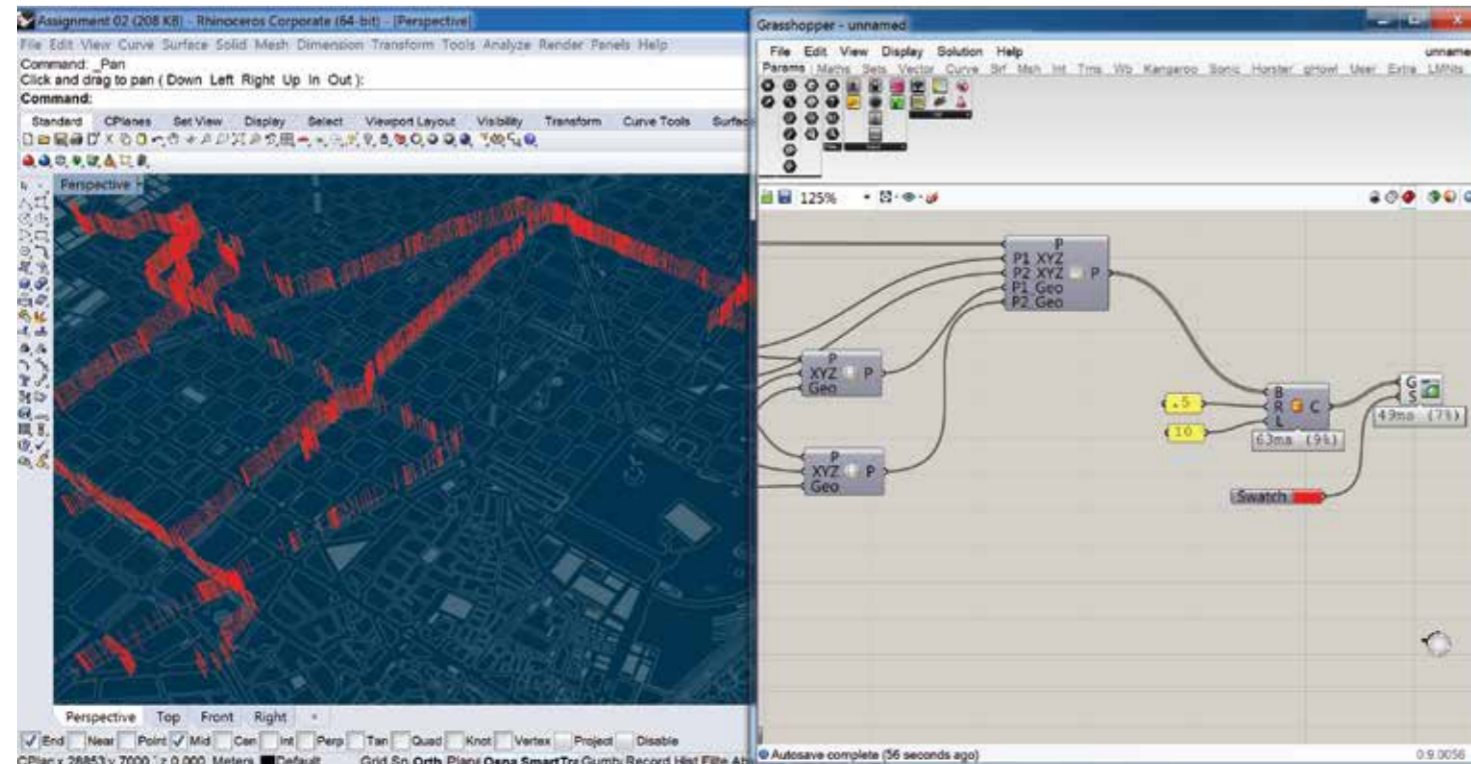
5. Then with the XML Parser and Expression from GH, the longitude & latitude values were extracted. The output values were then cleaned using clean tree.



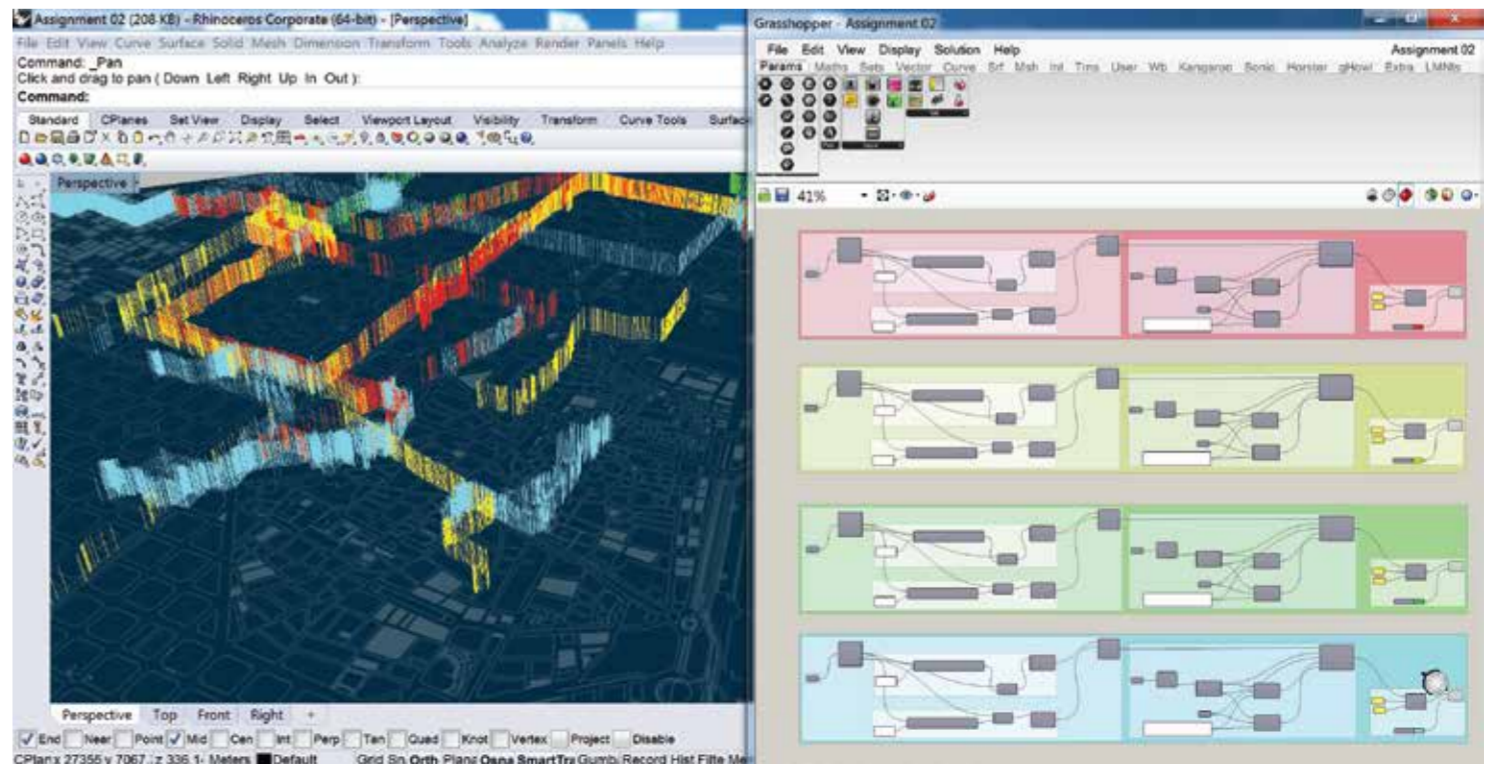
6. The Image Map was used as a surface for one reference point then the Point on the Rhino file used as the XYZ reference and the coordinates from Google Earth as the Geo coordinates to locate the tracks onto the surface image.

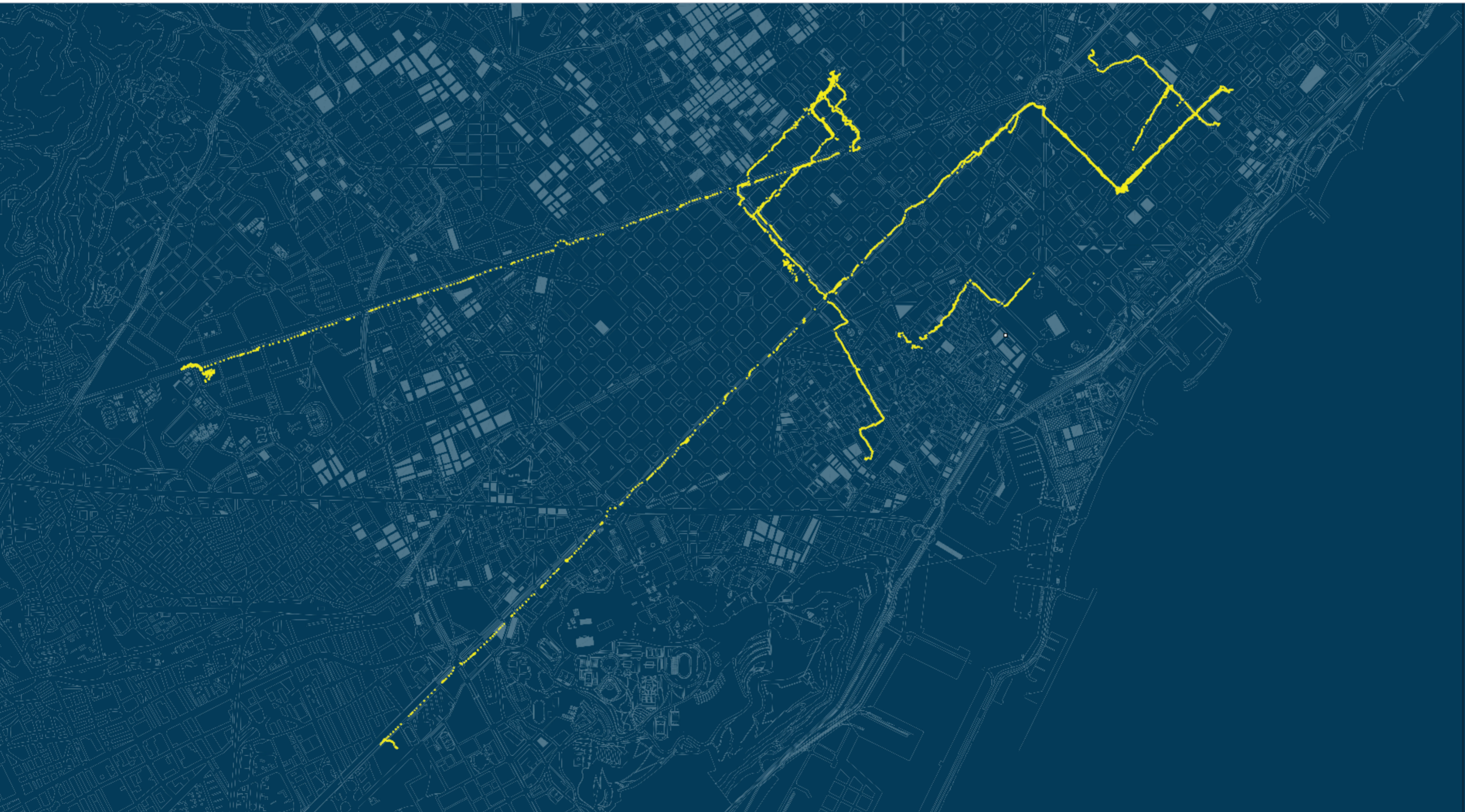
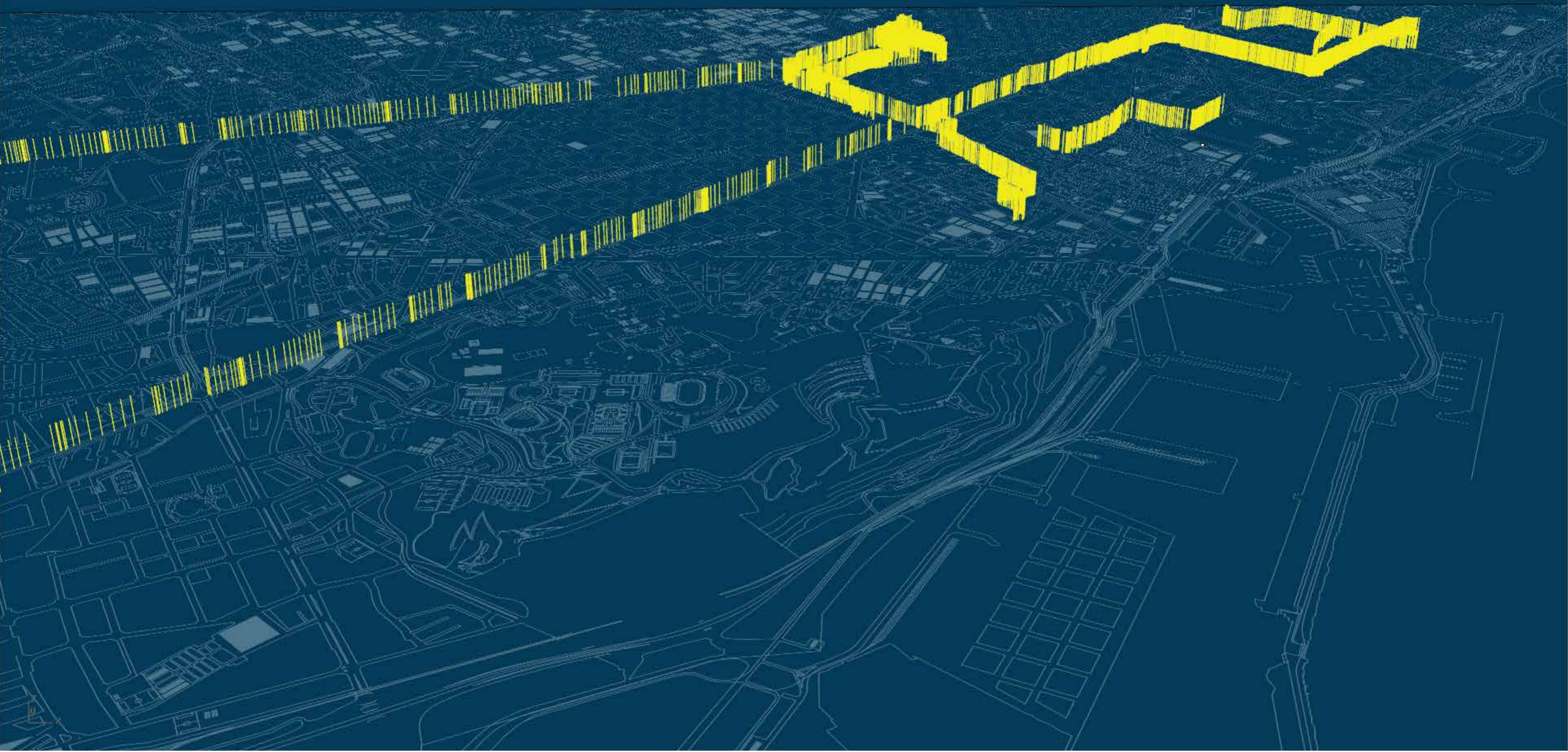


7. These points generated were then extruded as cylinders, a separate height and colour for all the 4 different tracks.



8. The GH definitions were then repeated with all the tracks to map on one surface.





Extracting Longitude & Latitude from file

TRACK 2

Referencing GEO to XYZ

