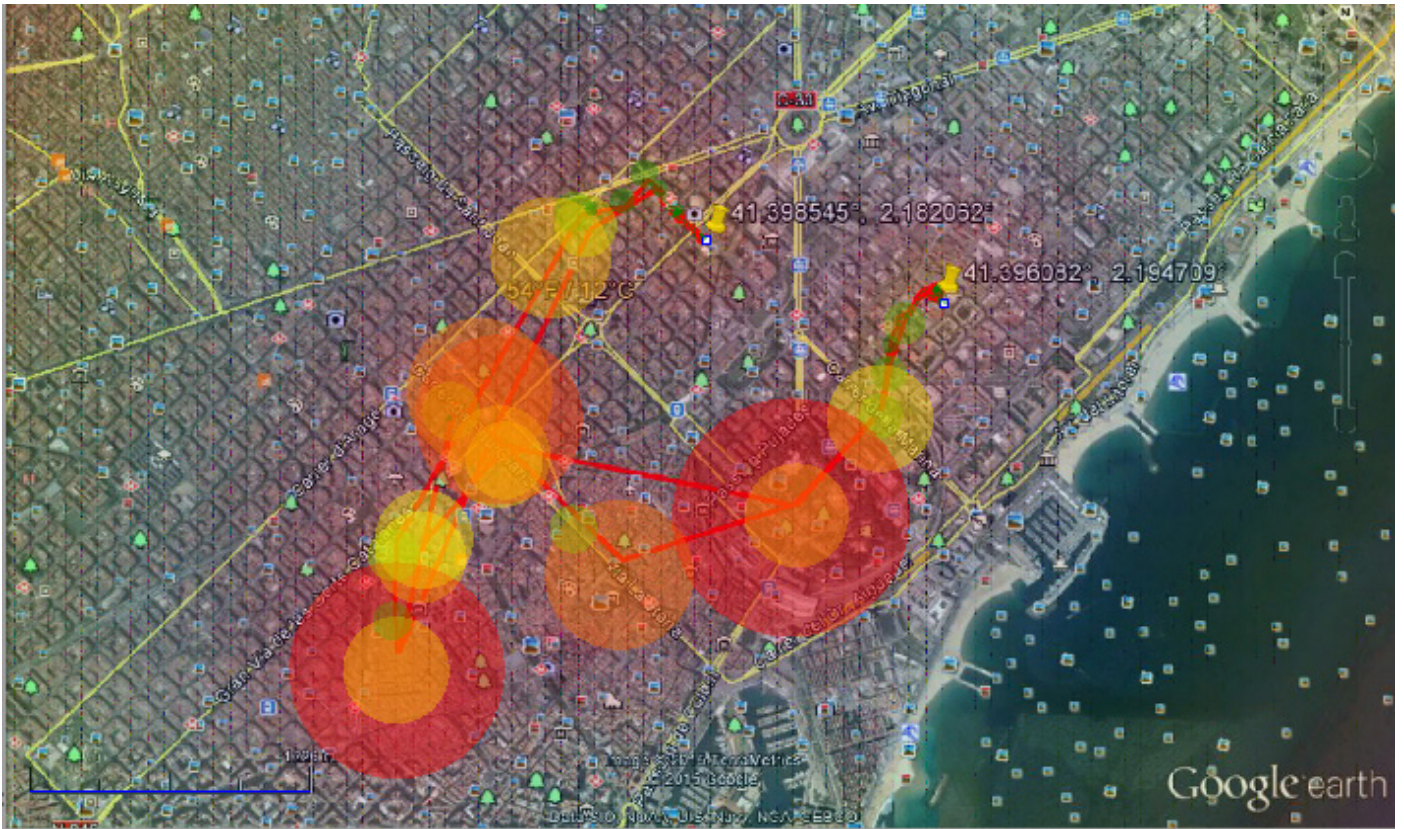
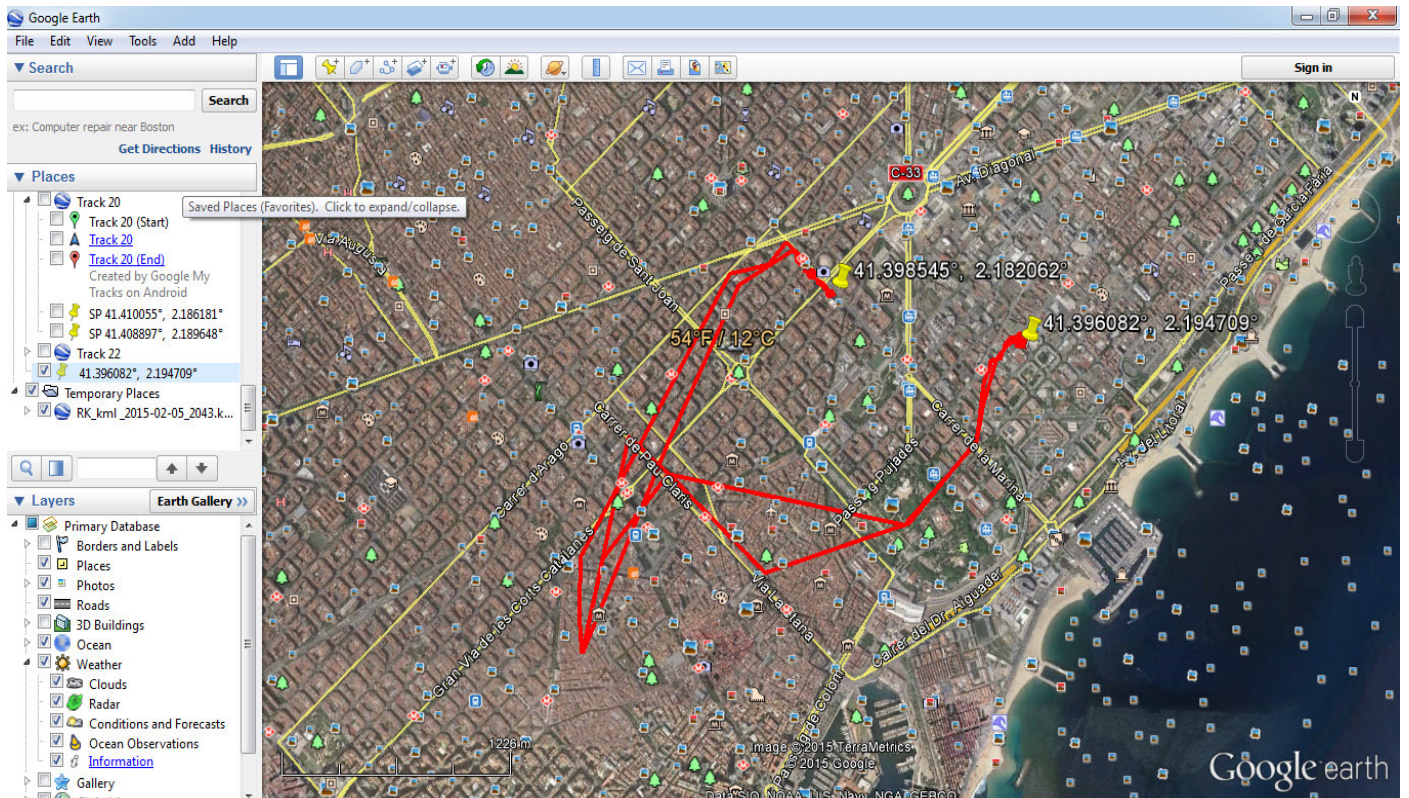


DESIGN ASSOCIATIVITY - GPS MAPPING  
MANSI RADADIA MAA01 2014/15

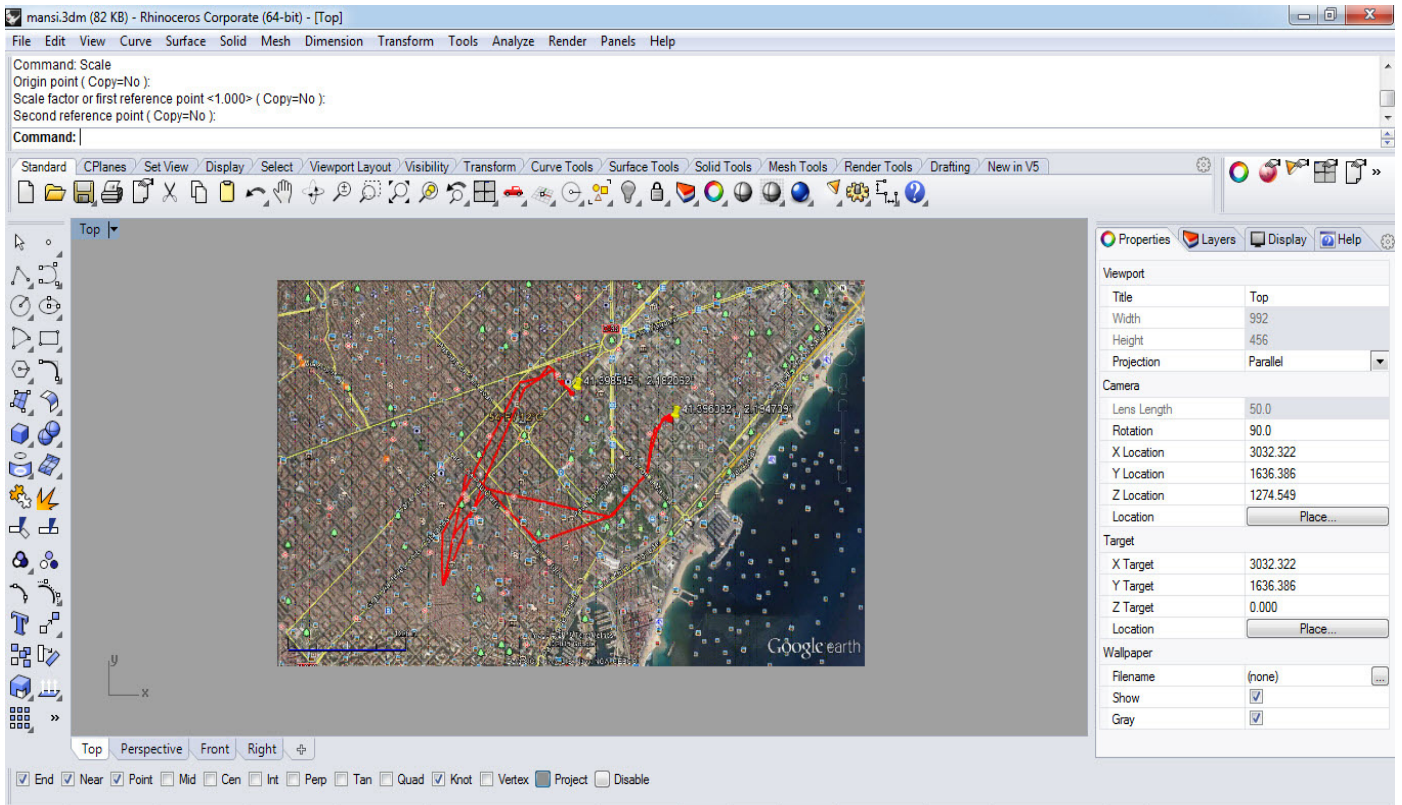
**Iaac**  
Institute for  
advanced  
architecture  
of Catalonia



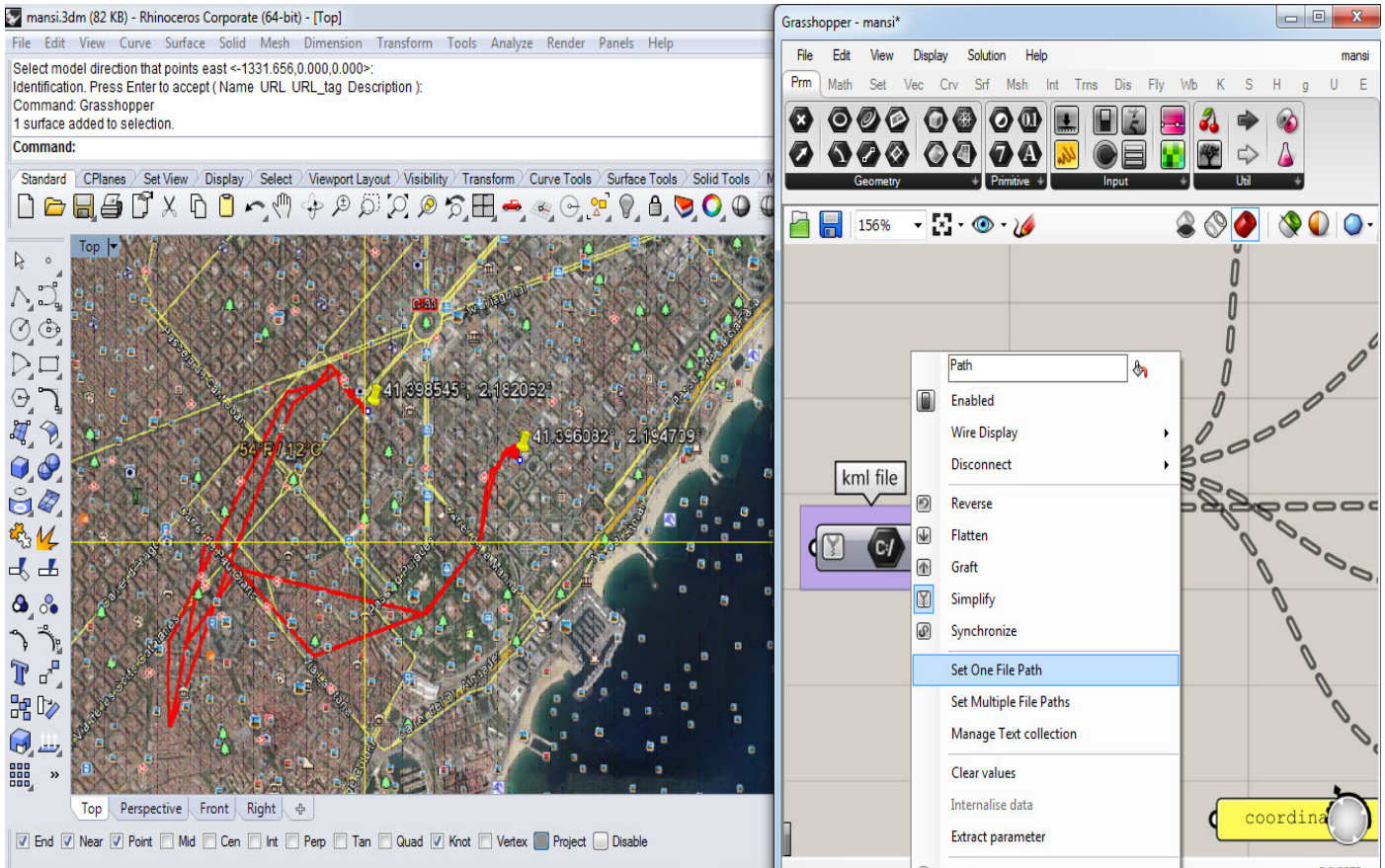
The exercise was to track personal or group activity. This exercise is done by tracking myself with various activities on my tracks application.



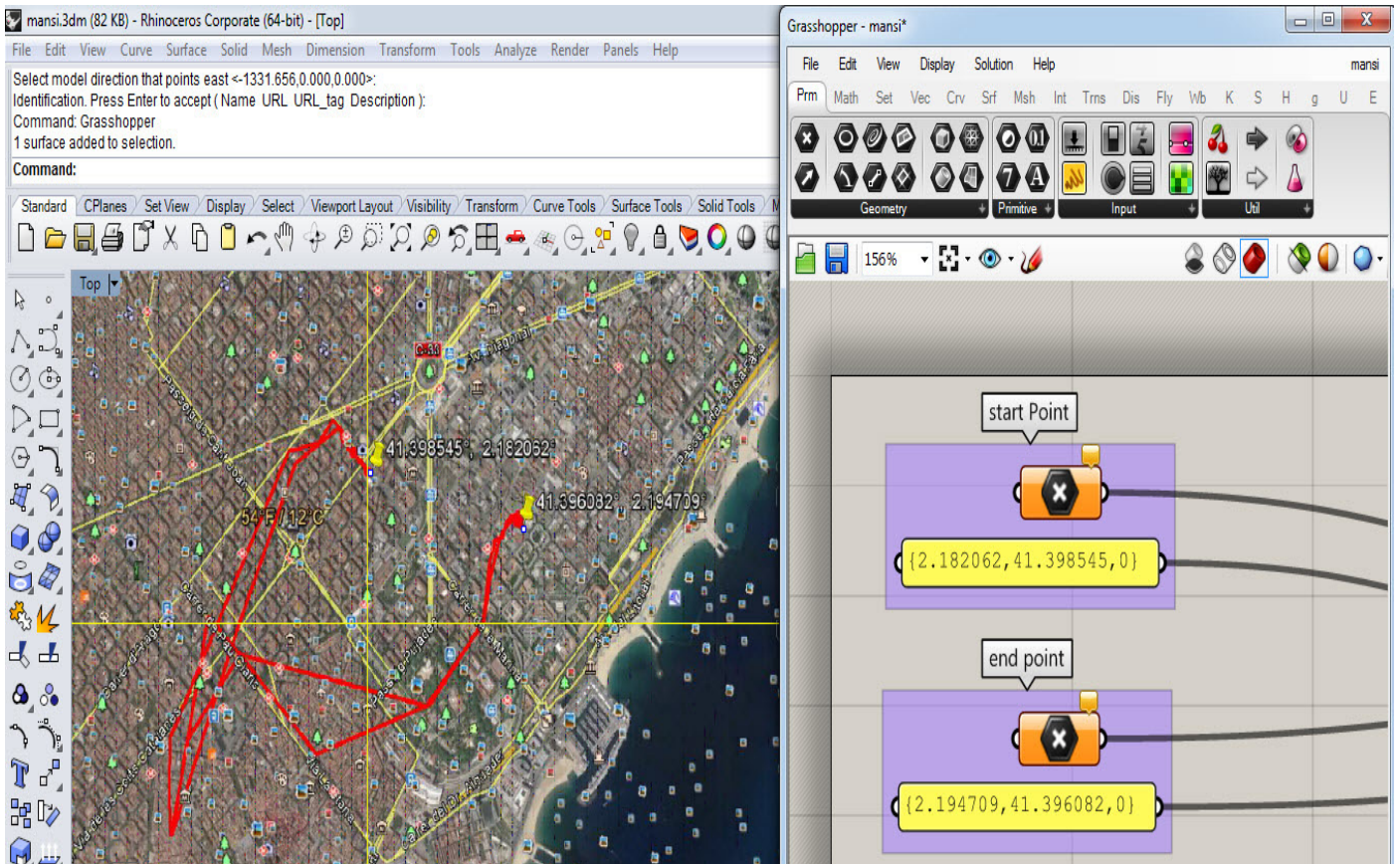
STEP 1 : first step is to place activity on google earth and to add coordinates.



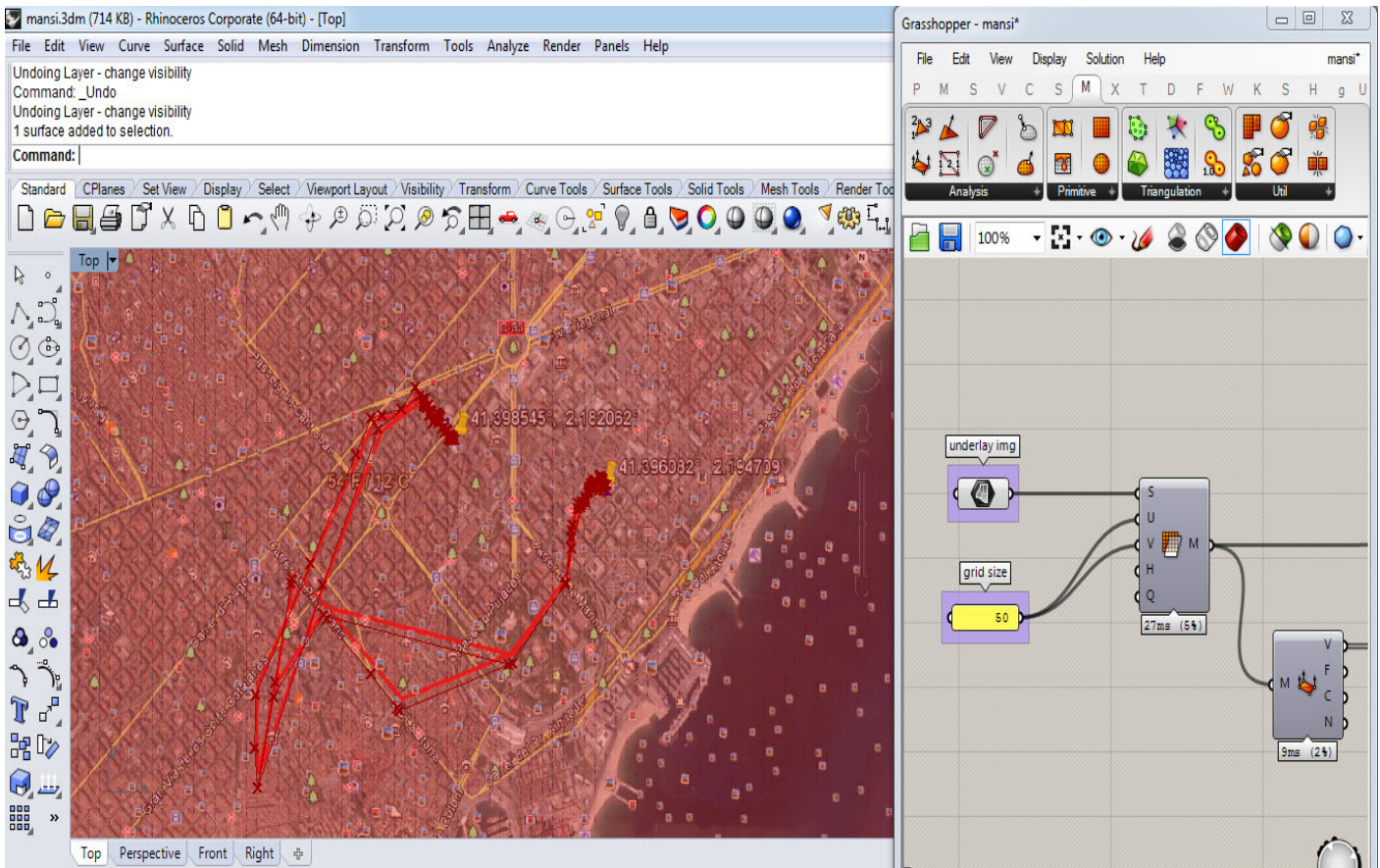
STEP 2 : placing underlay image in rhino and scaling it



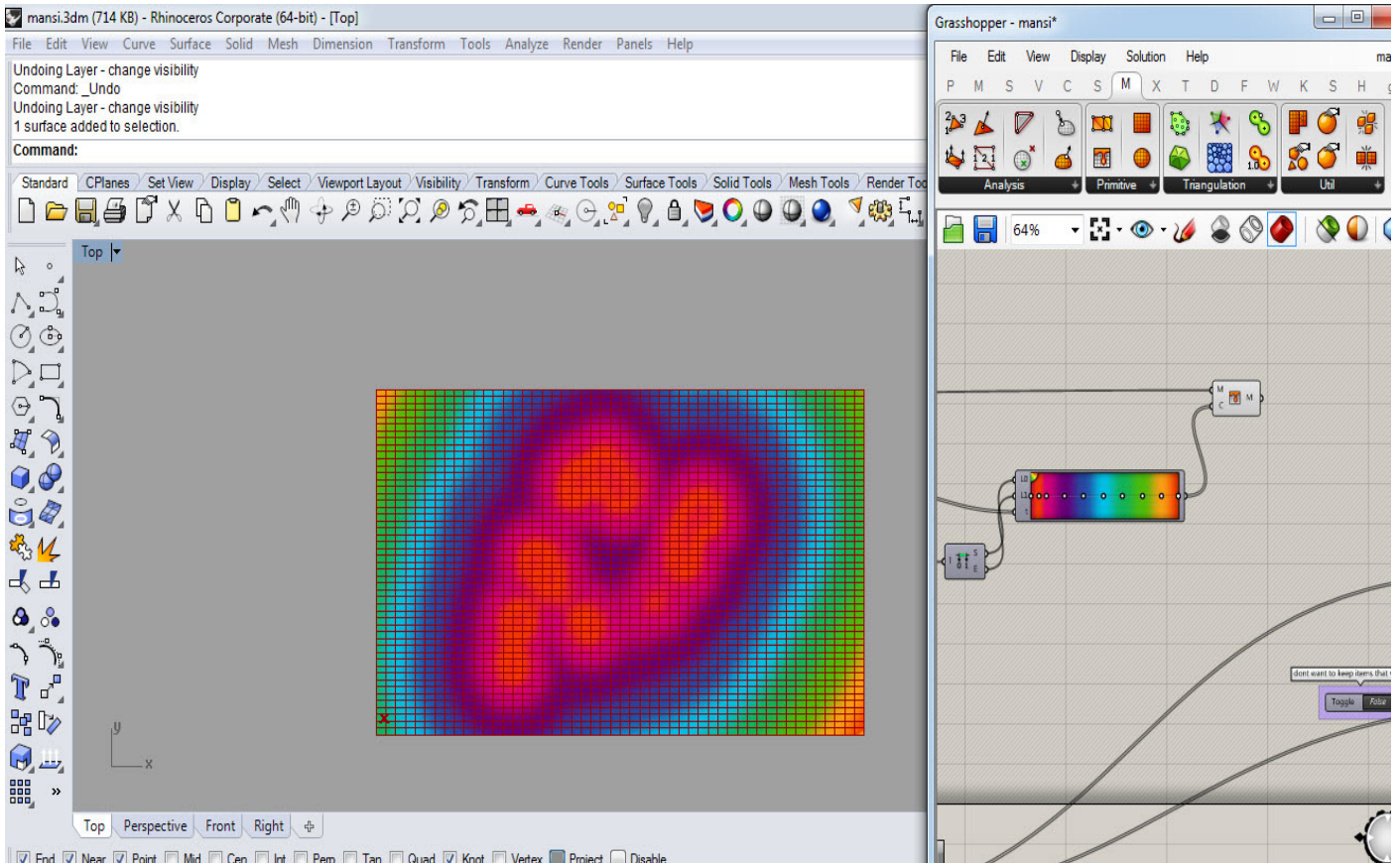
STEP 3 : place kml file in grasshoper script in kml format



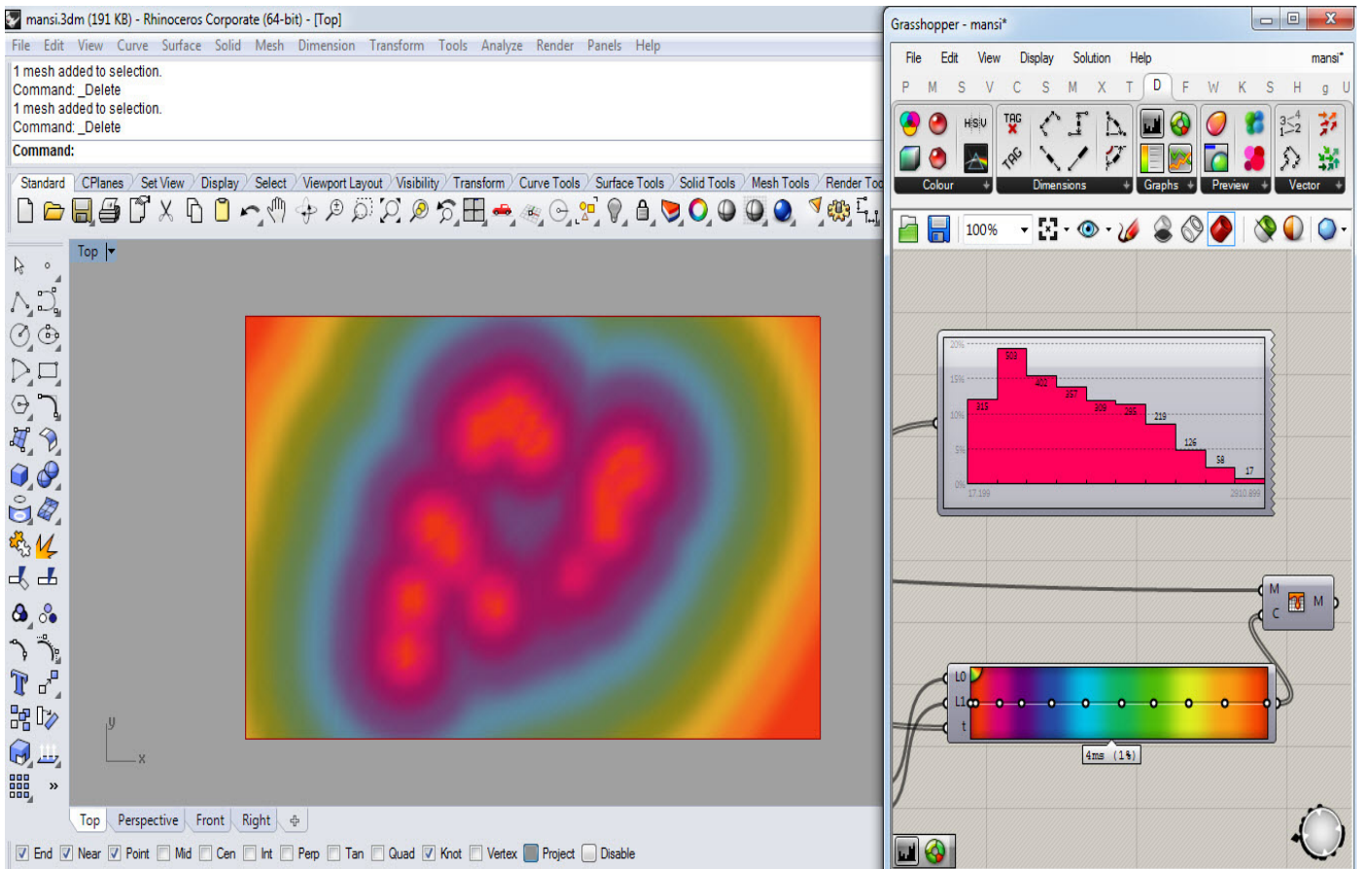
STEP 5 : setting up cordinates in grasshopper script



STEP 6 : creating mesh forsurface and closest point

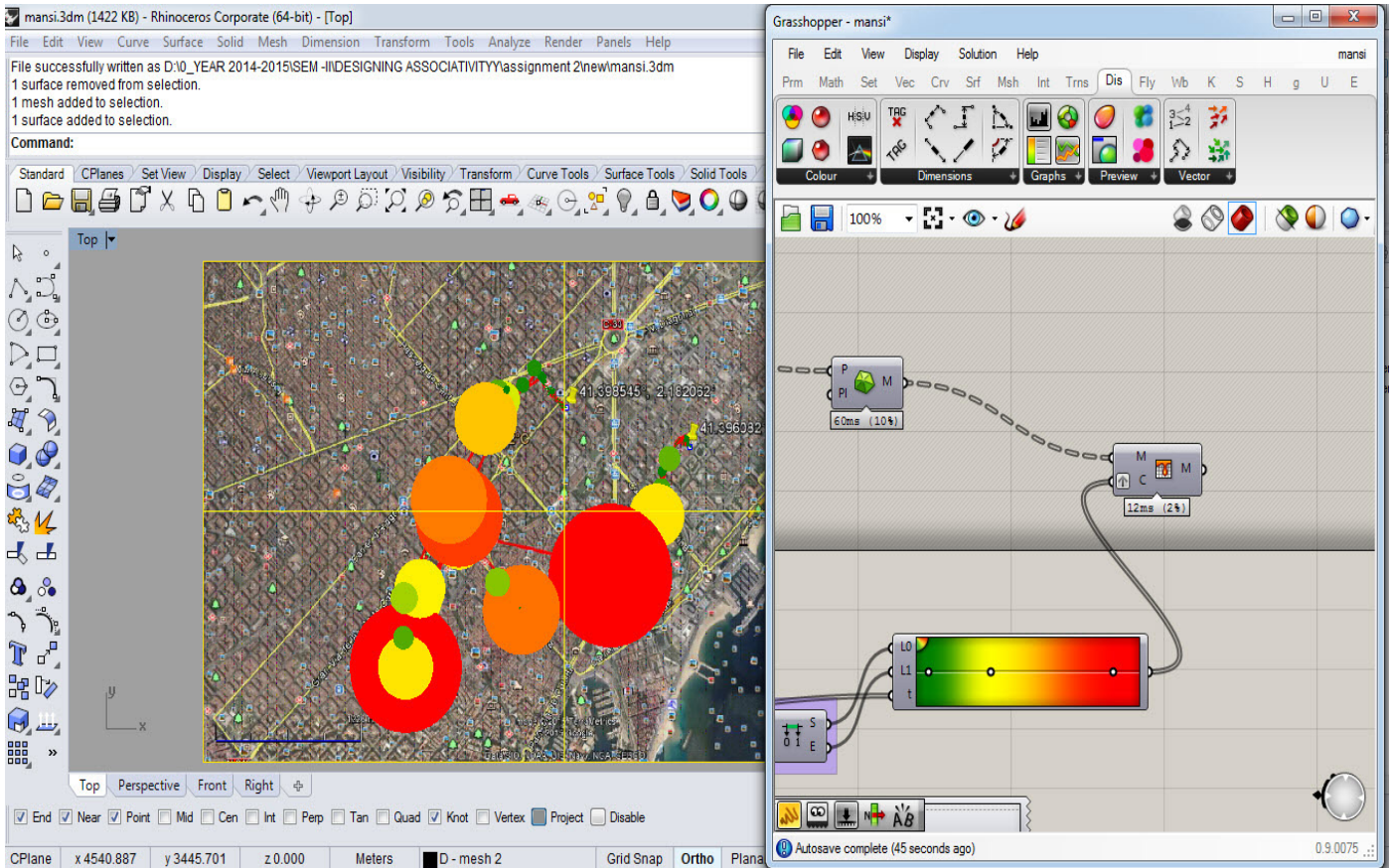


STEP 7 : adding mesh color and gradient to it

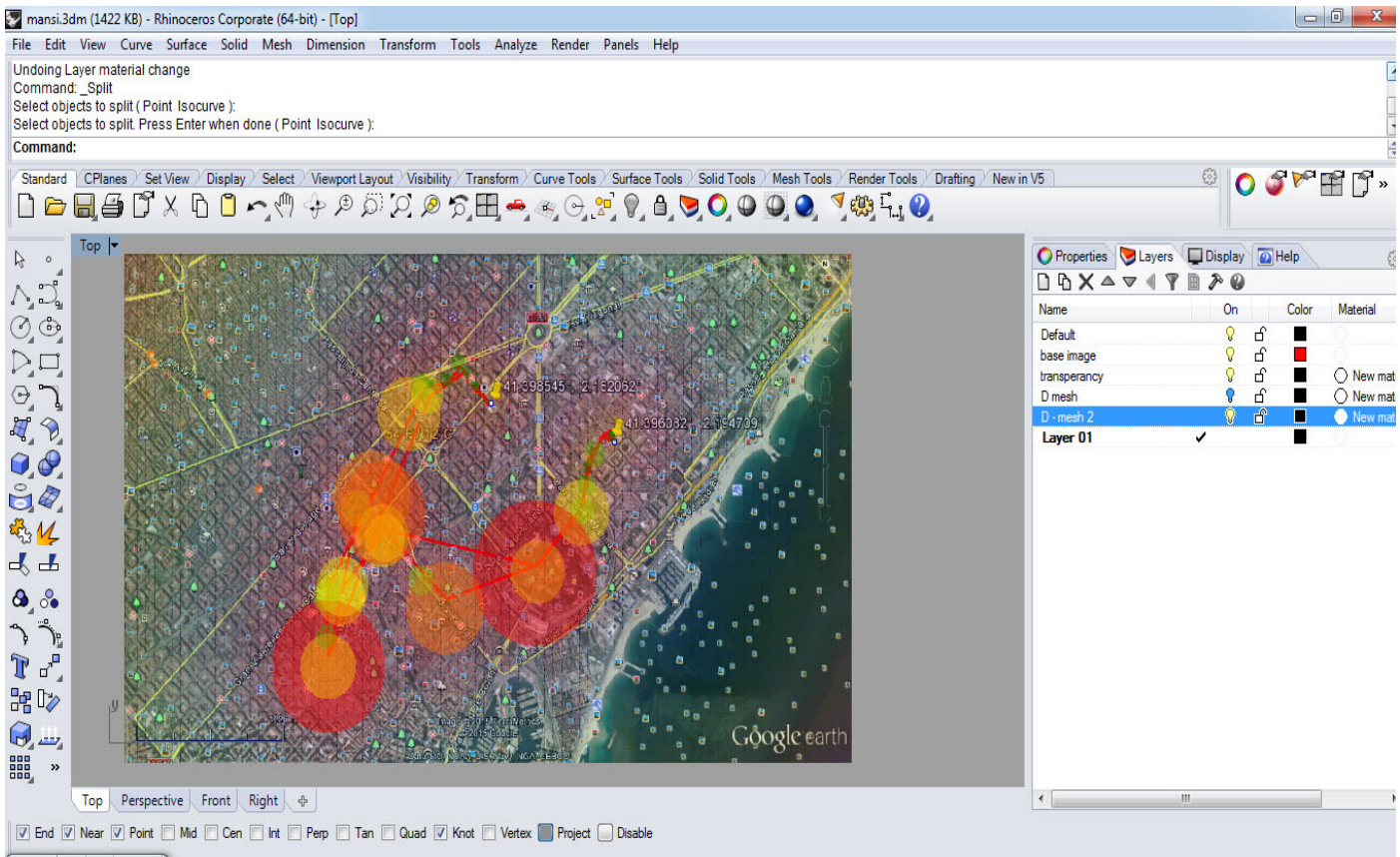


STEP 8 : bake mesh color to rhino .





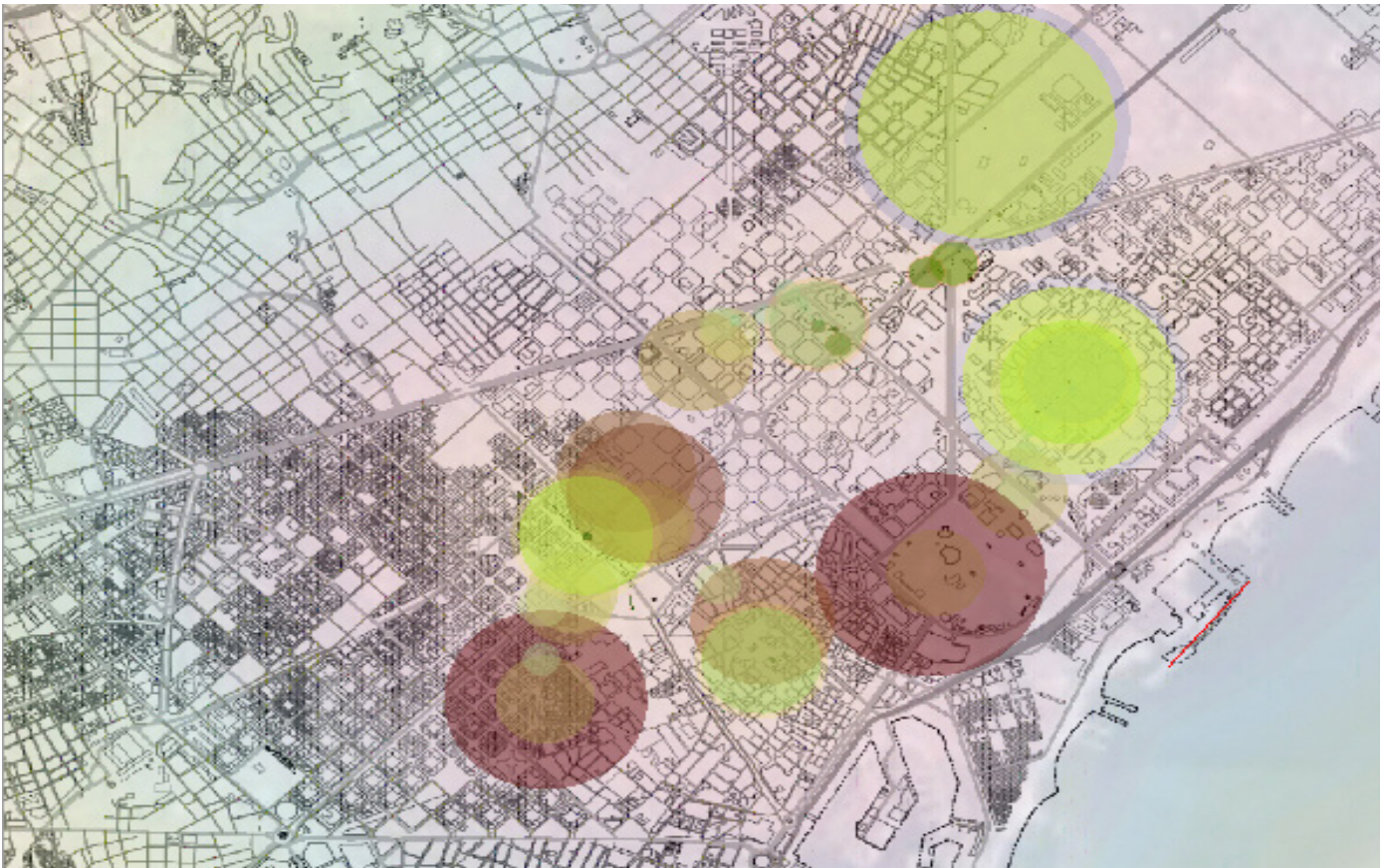
STEP 11 : creat color mesh to each circles



STEP 12 : settin up transparency layer

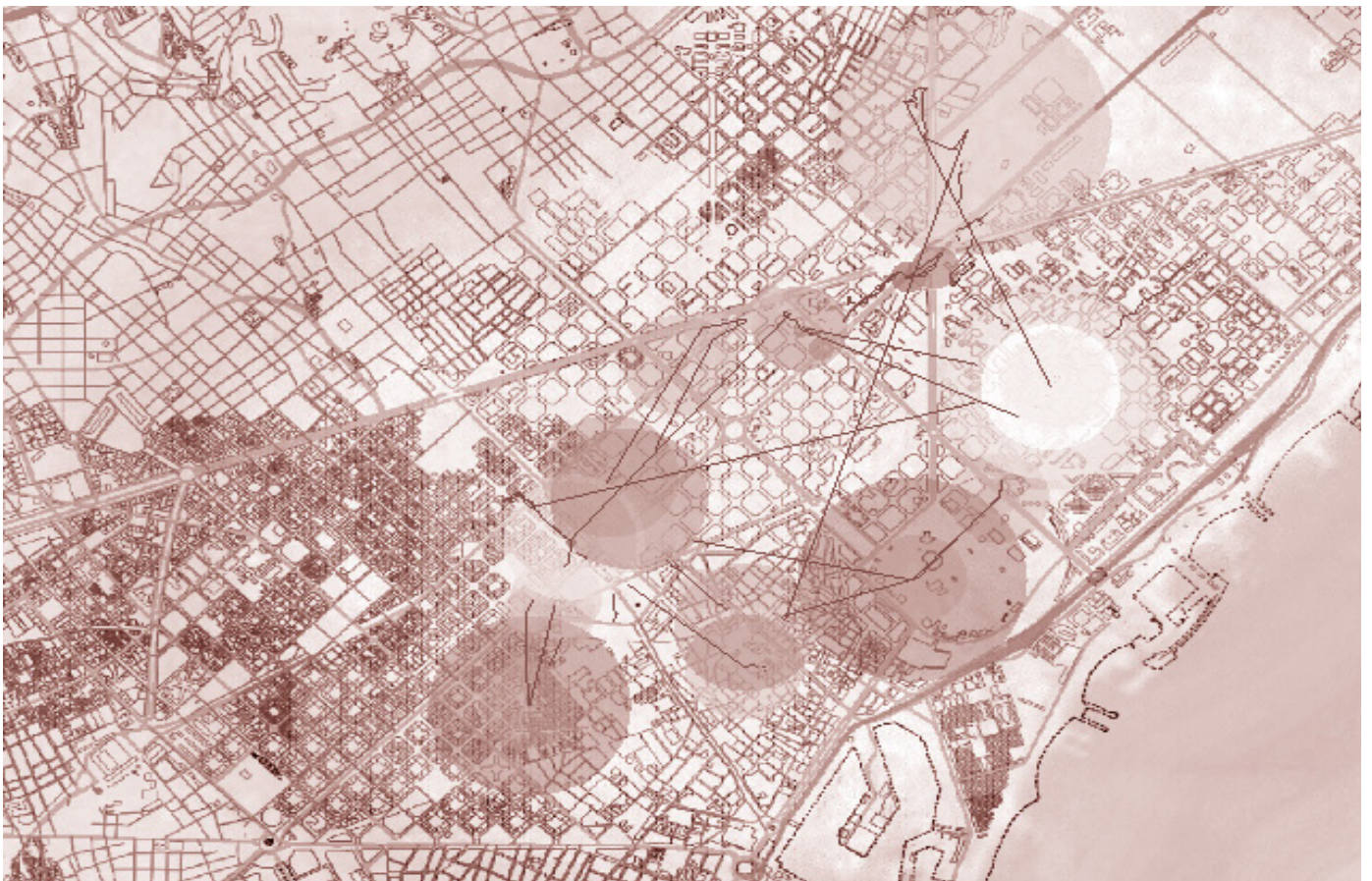


STEP 14 : replace braceloan city map with google earth image



STEP 15 : introducing mutipl tracks into single script





STEP 16 : final outcome of mergin all tracks together