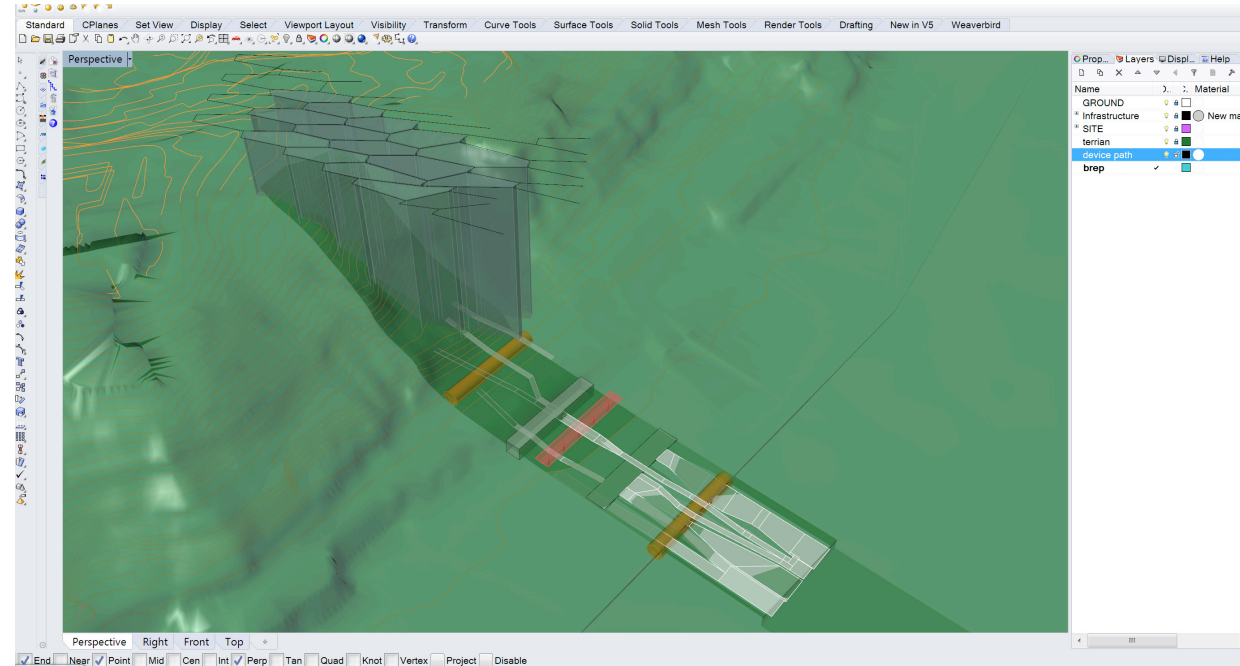


Brep

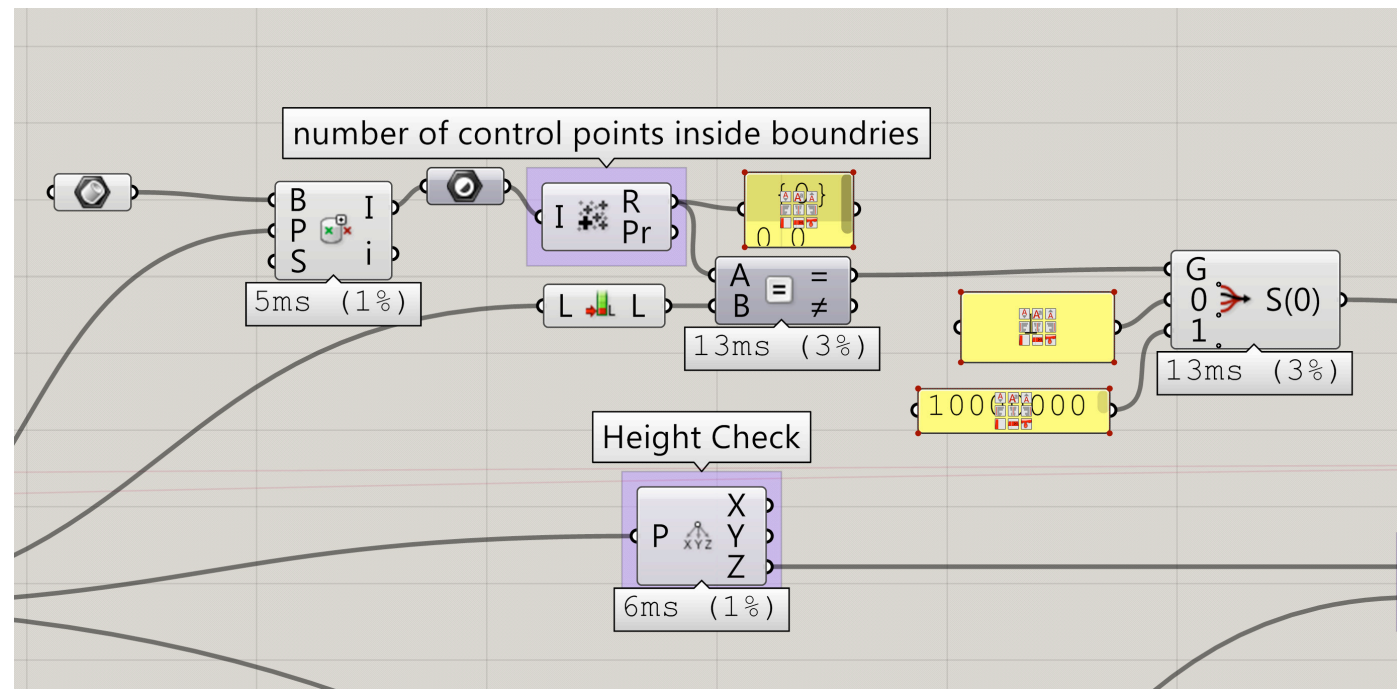
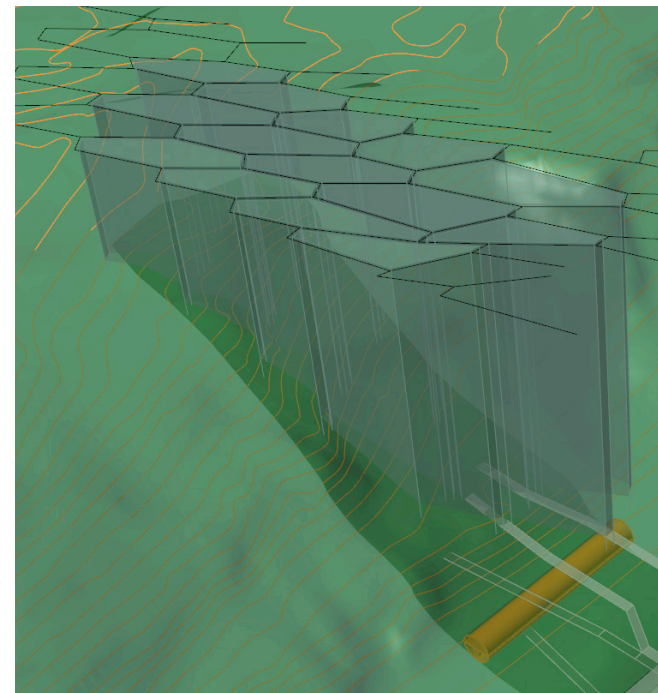


Our idea for using Galapagos because we would like to find the best spot of observatory to our site.

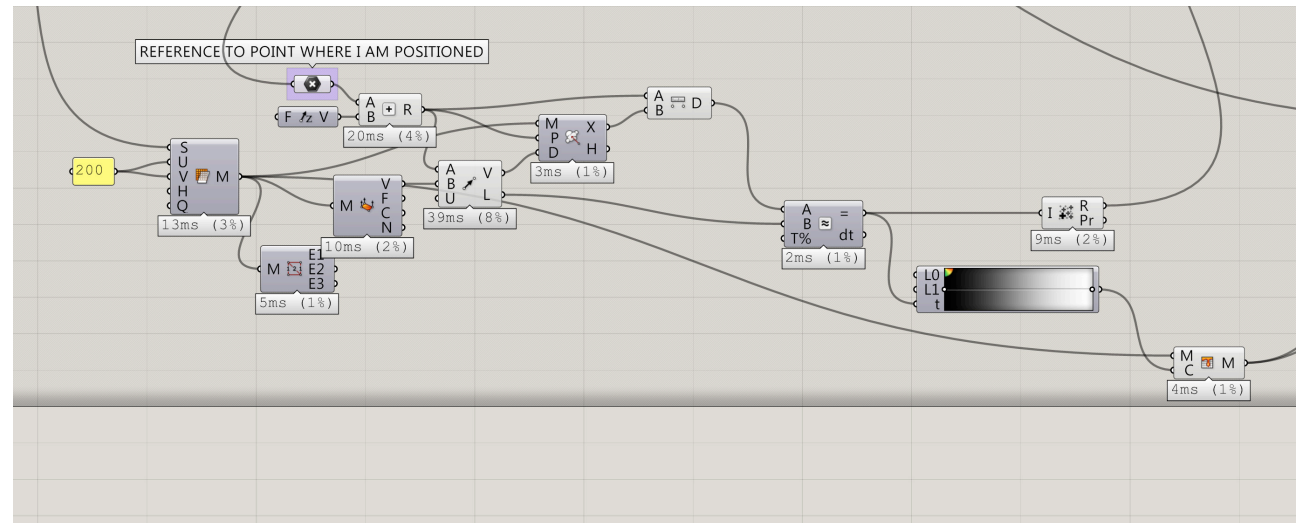
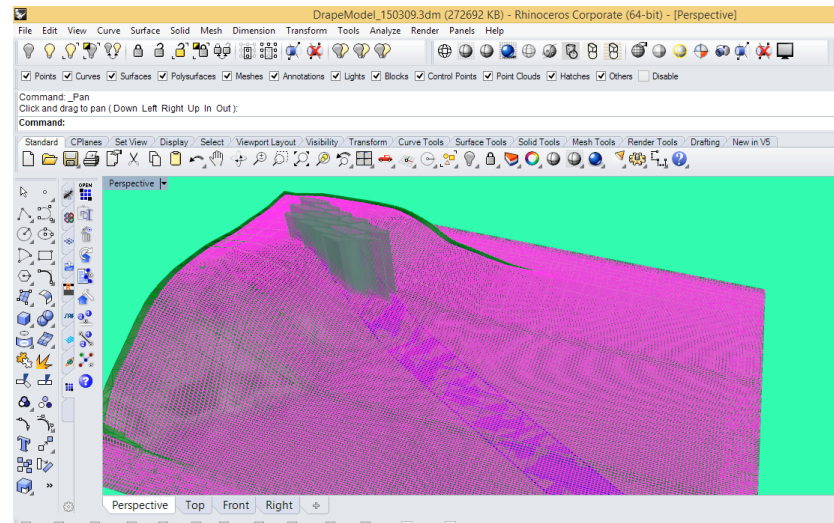
First we bring the plain terrain of our studio research line into Rhino.

Then we placed our design plan on our terrain and create hexagonal on the cliff which will be the specific place that we would like to use Galapagos to analyze.

We use Hexagonal Geometry that we set from Rhino as in our design this Hexagonal should be activity platform area then we put Brep into Grasshopper to force Galapagos to focus within this territory.



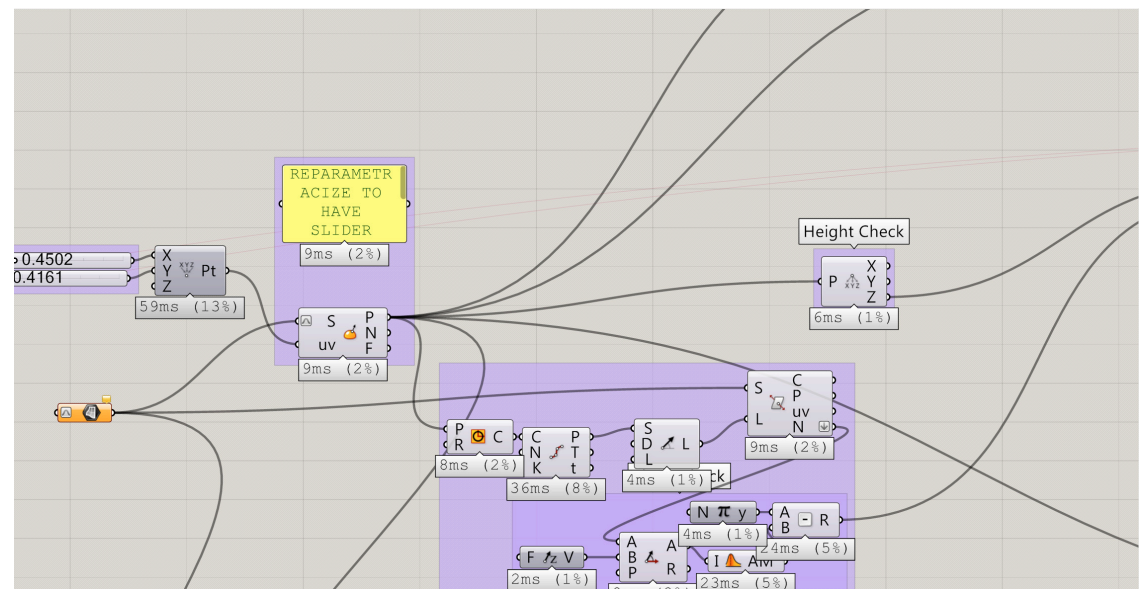
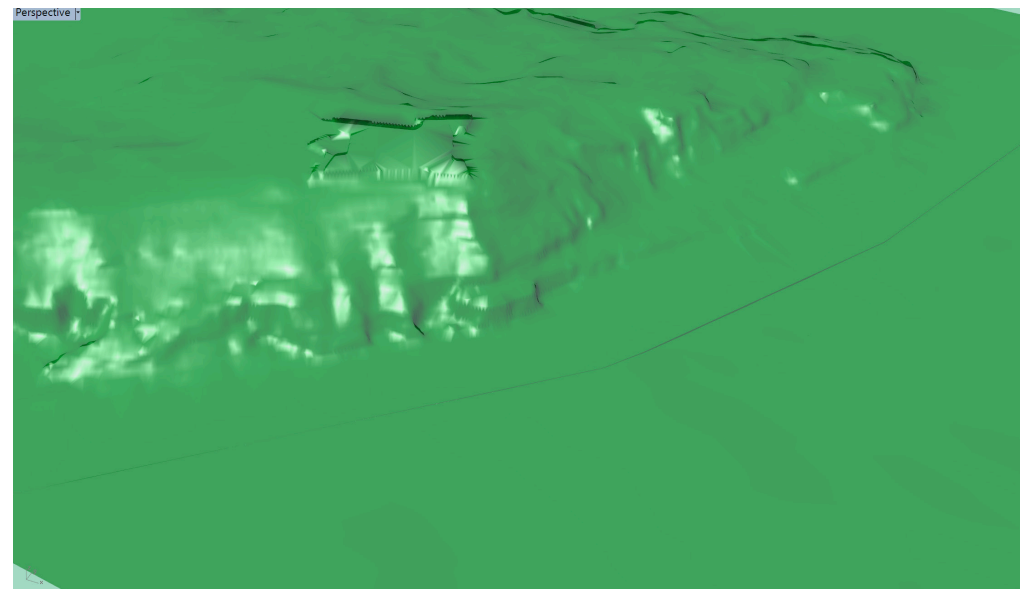
Divide the surface

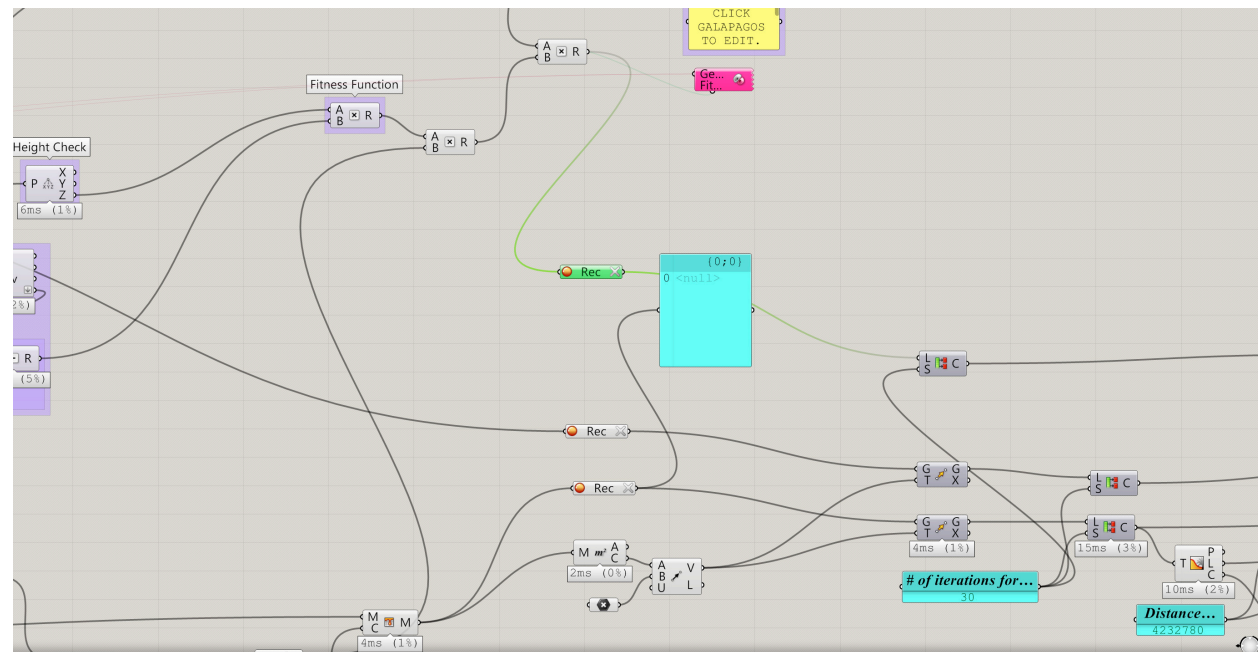
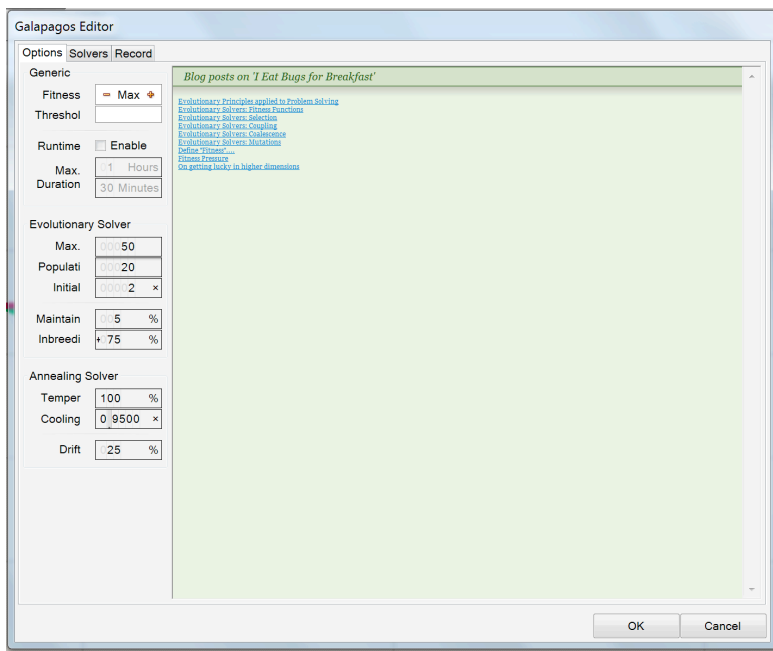


We set the point to make a line which will represent the view of our terrain to find the best point.

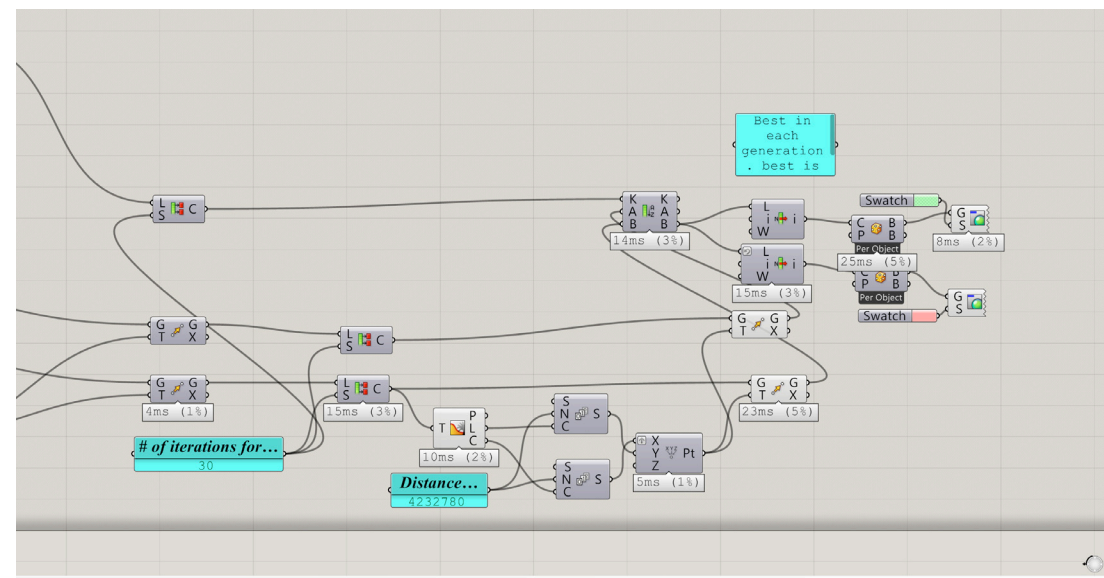
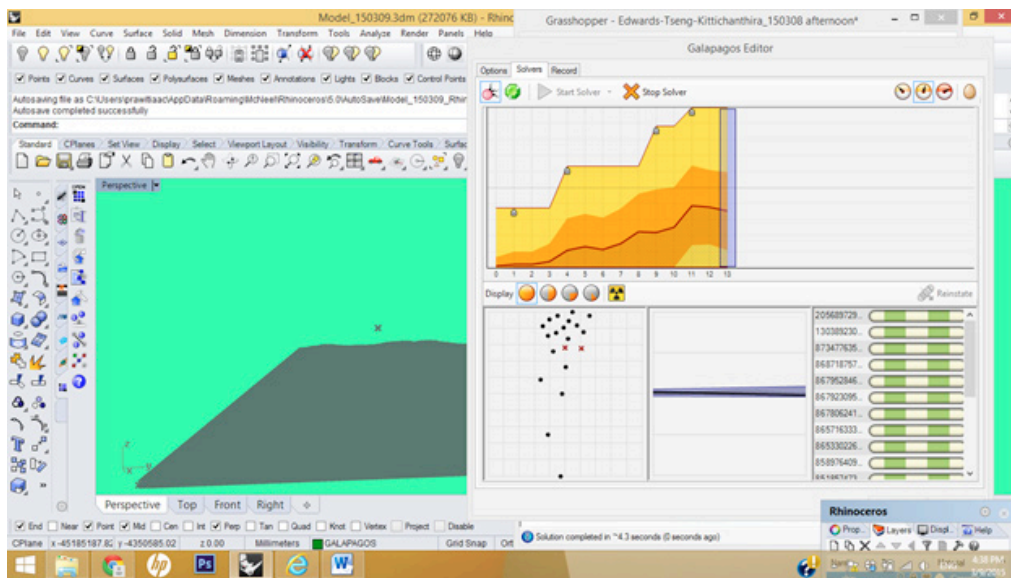
We have set the surface in Rhino as our subject to analyze then we put this surface into Grasshopper and set the point to evaluate this surface .

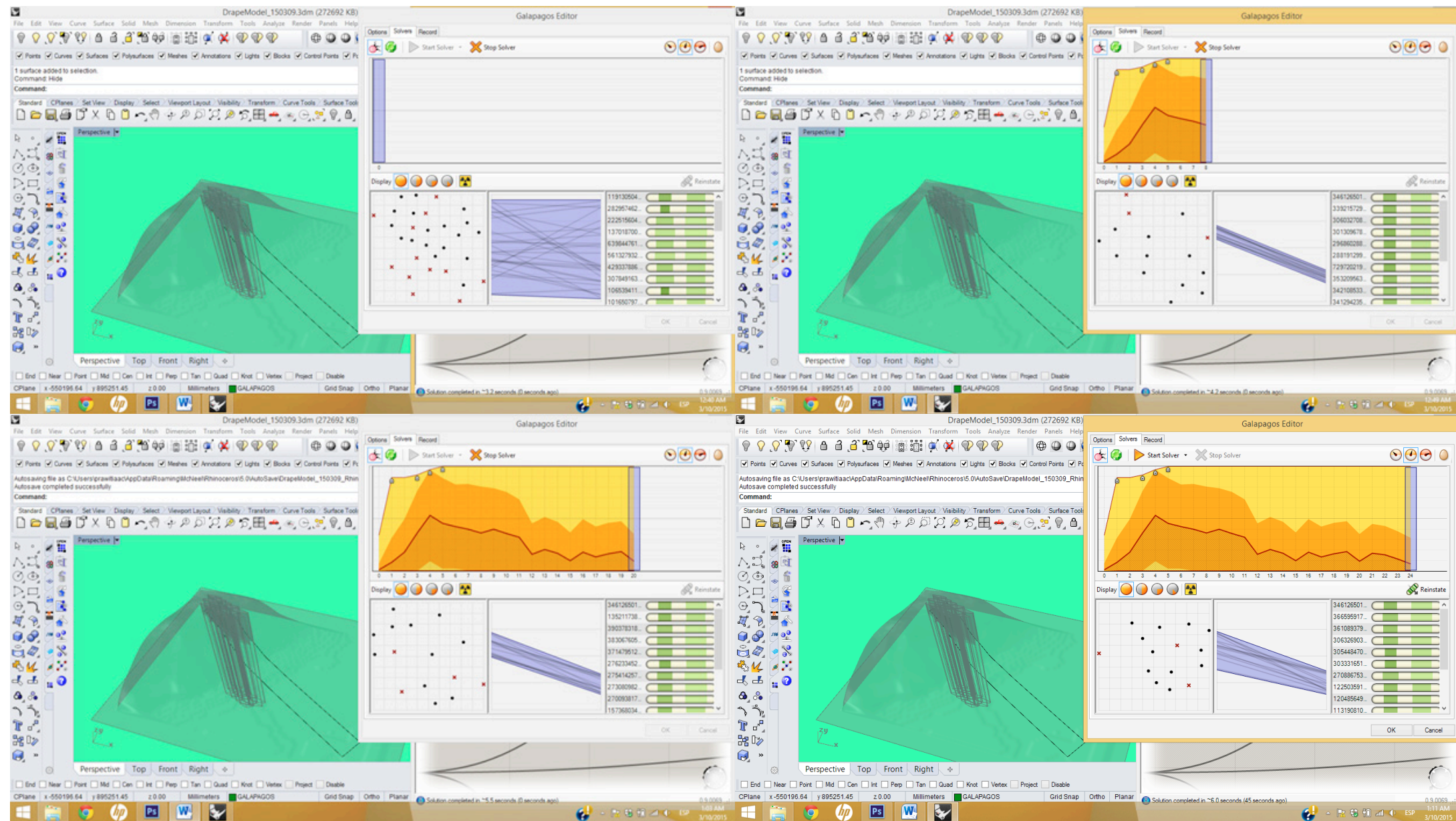
What we get from this is, we know the highest point for observatory view point of this surface which will be our best view.





Then we run the galapagos to record the point on the mesh to find the best view point on our site.







y
x

