

Post Box



We chose to draw a post box as our urban element. One of the difficulties we had, was to achieve the best resolution of the object.

We start making the photos with an Iphone, but the resolution was too low so we had to use a professional camera. We made 29 photos, taking all the possible angles, moving from the bottom to the top of the object.

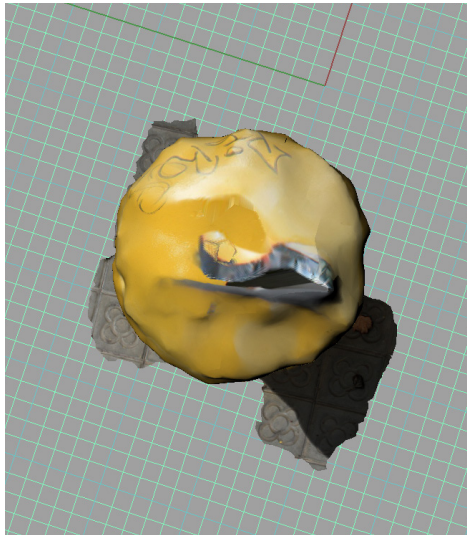
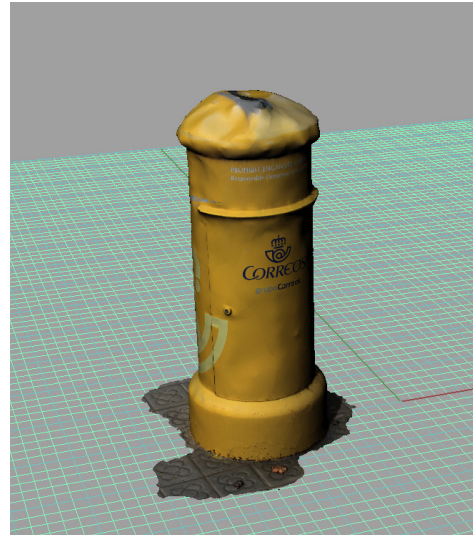
We started making the contour from the right side of the object, and then we revolved the curve of 360 degrees, so we got the basic shape of the box. Then we started adding more details on the box to make it look more realistic.

We didn't have any problems on shaping the form.

Pictures of the Post Box



Captures of the 123D-object



Captures of the Rhino-object

