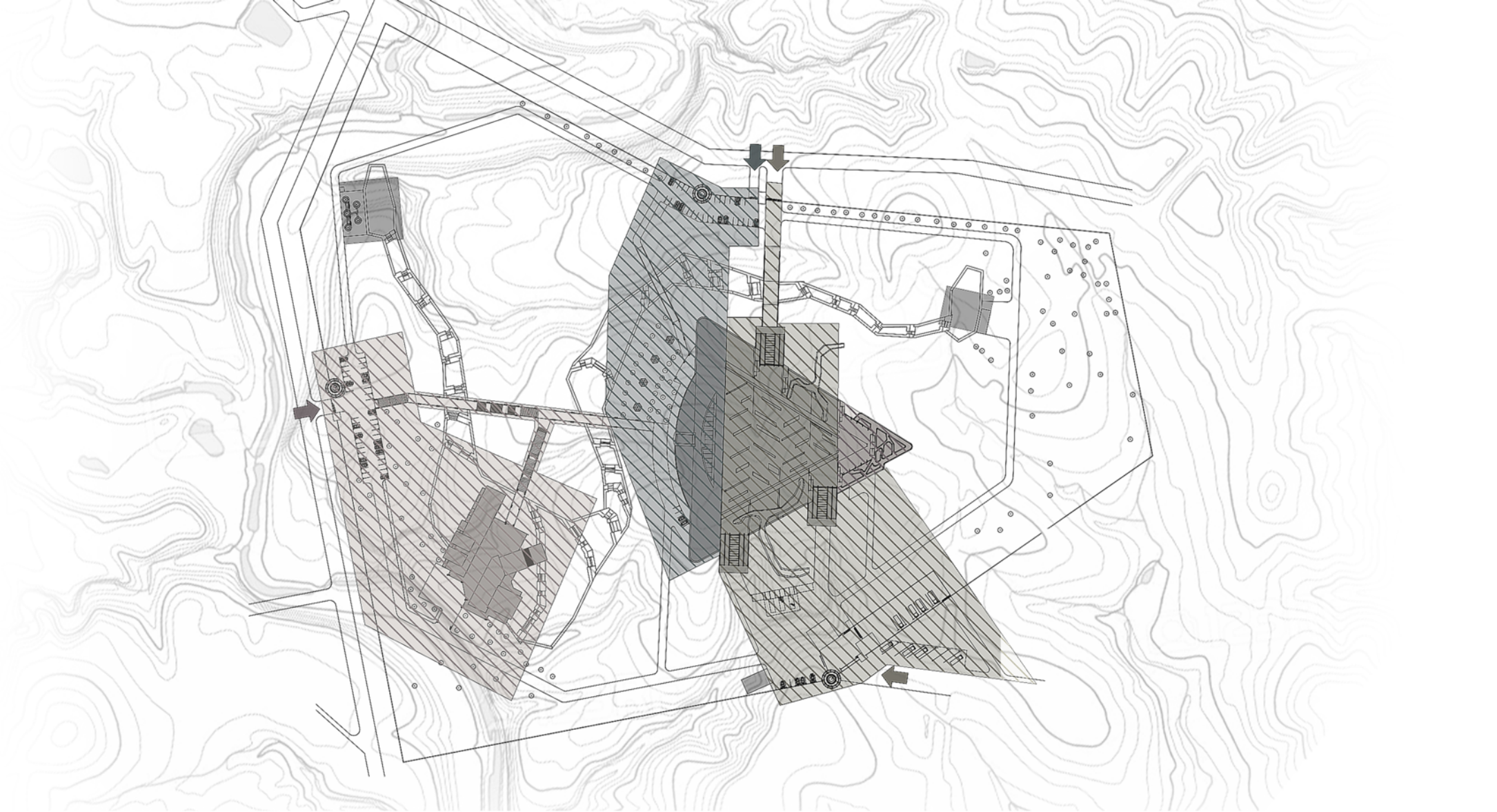


New Interfaces
storyboard



Using orbital camera and turning into 360 degrees we can see all the object itself, and also explore the territory. In this action we are supposed to see general information about the project.



Using 3D model mark functional zones and give specific information about them

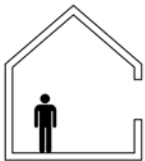
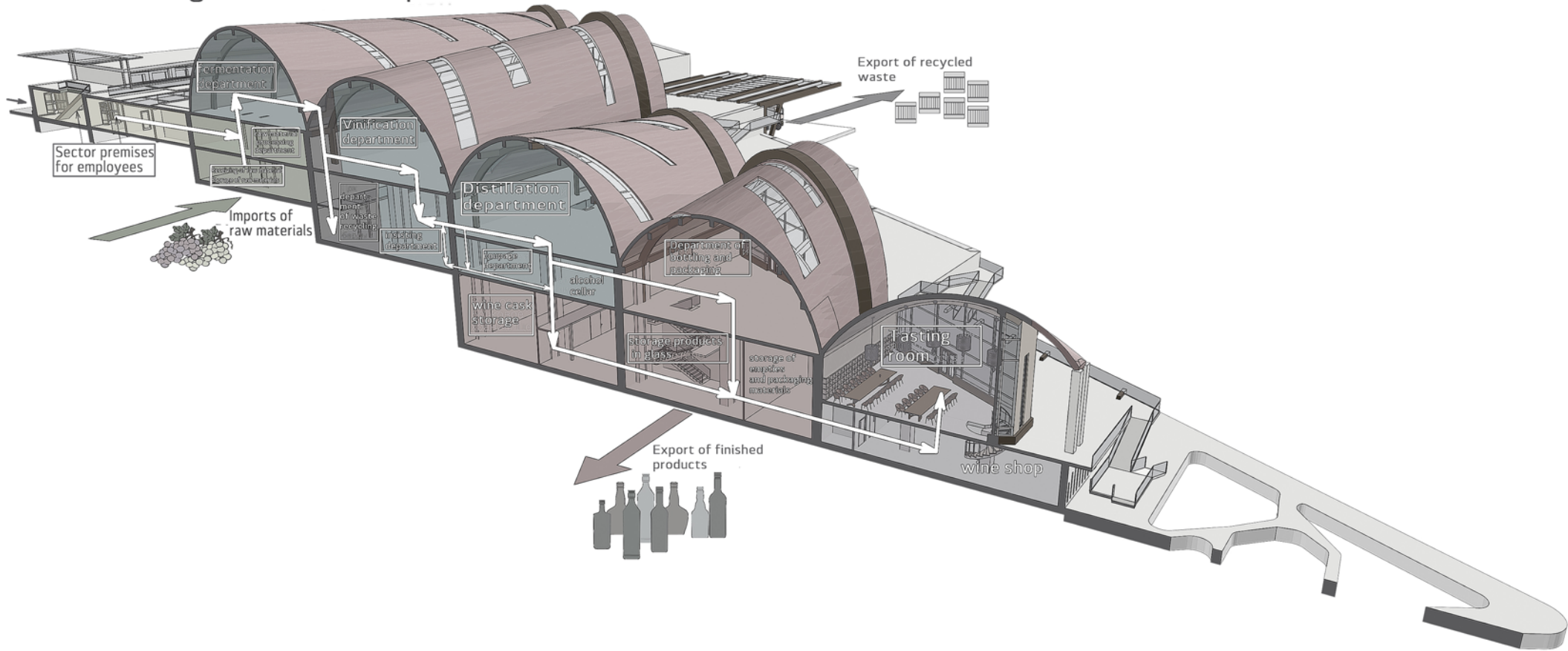


Using 3D model and additional graphics show the main functional routes and access points with appropriate information about them.

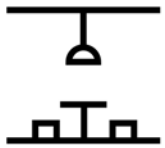
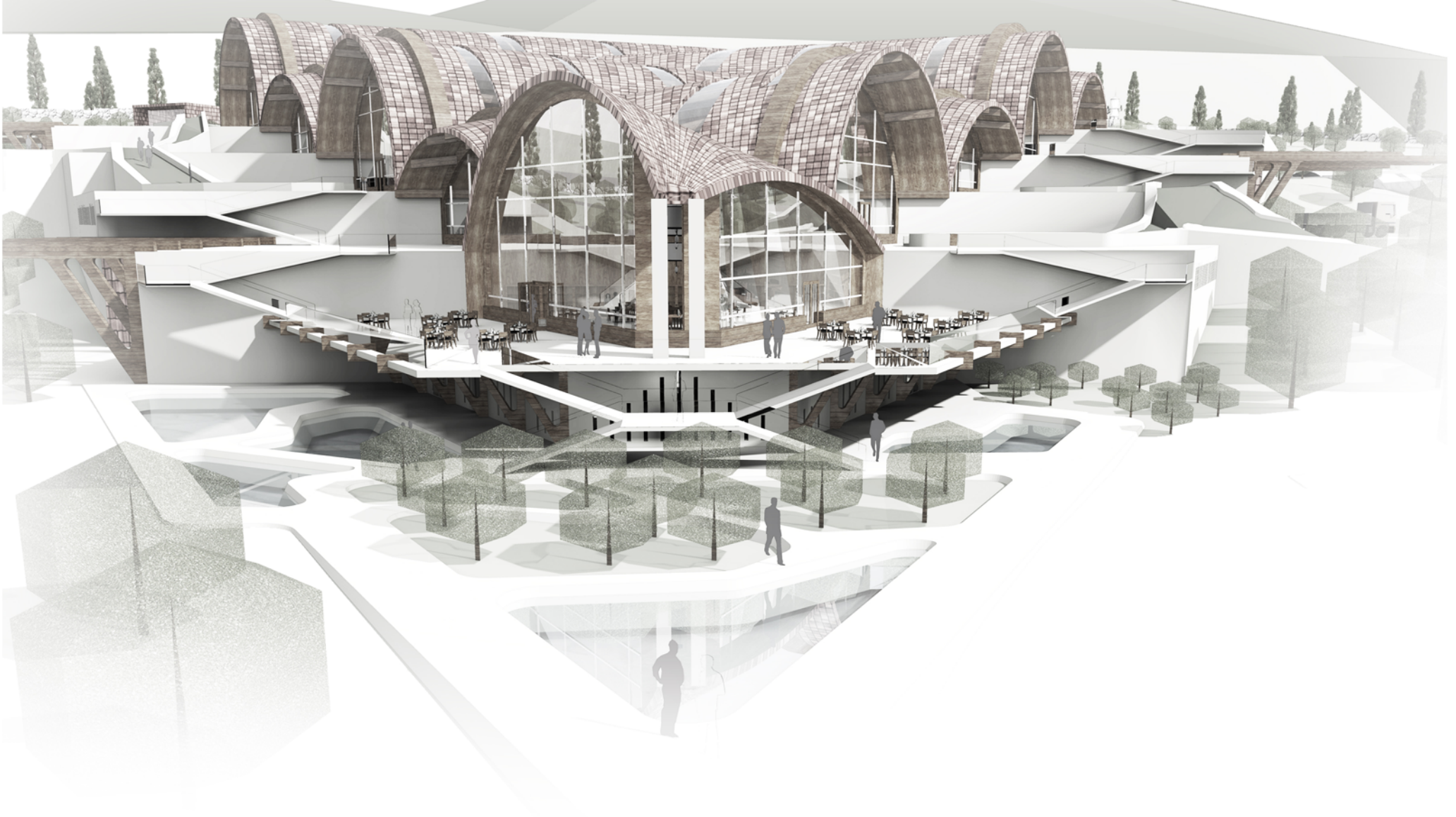
Action 3

Access Points/ Main routes

Technological scheme of production



Using 3D Section cut the model and show technological scheme of production with appropriate information. Supposed to use free camera



Using free camera zoom the main building and come inside to observe the interior, also add some appropriate information about inside space.